

GRAND FORKS, NORTH DAKOTA

# RNAV (GPS) RWY 18

APCH CRS 177°	Rwy Idg 12,351
	TDZE 900
	Arprt Elev 911

AL-5010 (USAF)

GRAND FORKS AFB (KRDR)

RNP APCH-GPS

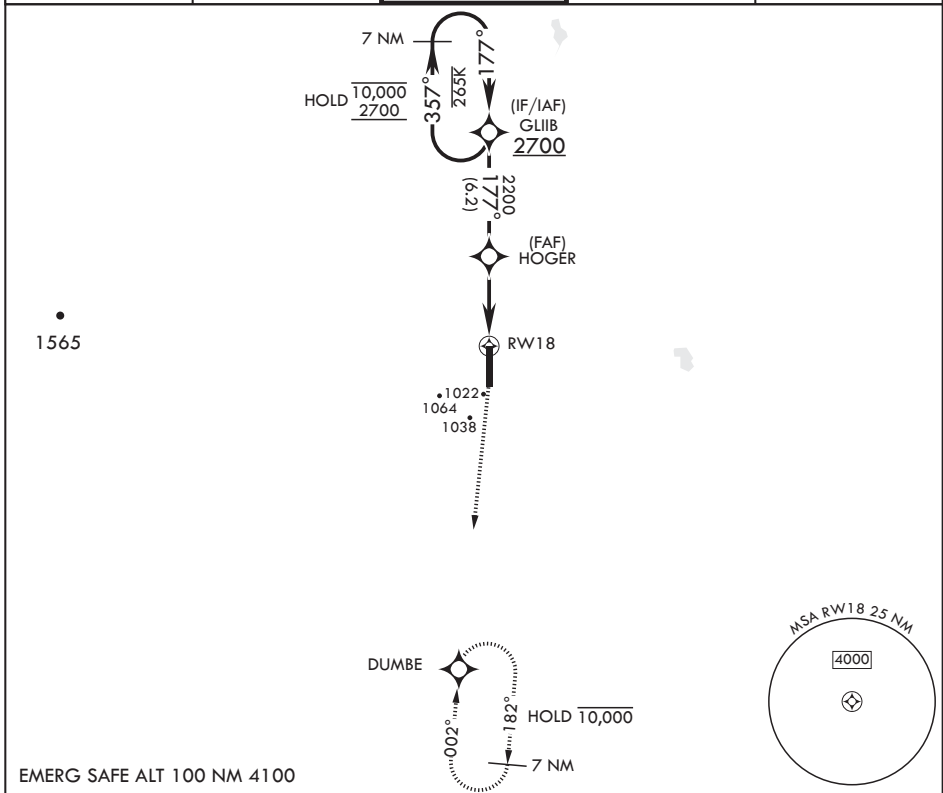
ALSF-1

MISSED APPROACH: Climb to 1500 then climbing right turn to 3000 direct DUMBE and hold.

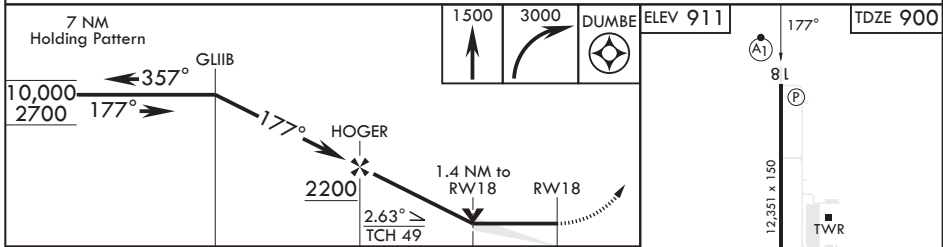
\* When ALS inop, increase CAT AB RVR to 55, vis to 1 mile; CAT CDE vis to 1 1/4 miles.  
\*\* Circling E of Rwy 18-36 not authorized.



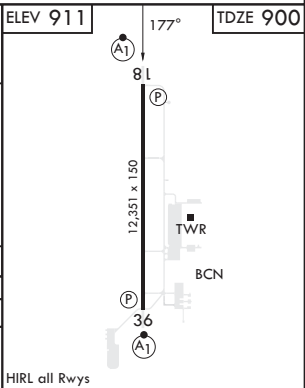
ATIS 273.45	APP CON 118.1 318.1	RED RIVER TOWER 124.9 349.0	GND CON 119.15 275.8	CLNC DEL 119.15 360.7
----------------	------------------------	--------------------------------	-------------------------	--------------------------



EMERG SAFE ALT 100 NM 4100



CATEGORY	A	B	C	D	E
LNVA MDA*	1340/24 440 (500-½)	1380-1 469 (500-1)	1380-1½ 469 (500-1½)	1540-2 629 (700-2)	1560-2¼ 649 (700-2¼)
CIRCLING**	1340-1 429 (500-1)	1380-1 469 (500-1)	1380-1½ 469 (500-1½)	1540-2 629 (700-2)	1560-2¼ 649 (700-2¼)



GRAND FORKS, NORTH DAKOTA

47°58'N - 97°24'W

GRAND FORKS AFB (KRDR)

Orig 10AUG23

# RNAV (GPS) RWY 18

NC-1, 13 JUN 2024 to 11 JUL 2024

NC-1, 13 JUN 2024 to 11 JUL 2024