

GRAND FORKS, NORTH DAKOTA

RNAV (GPS) RWY 36

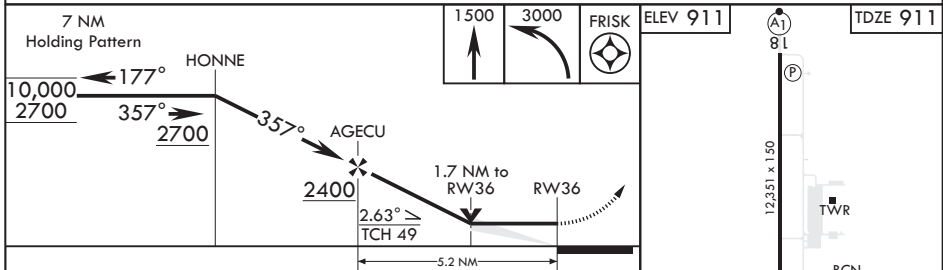
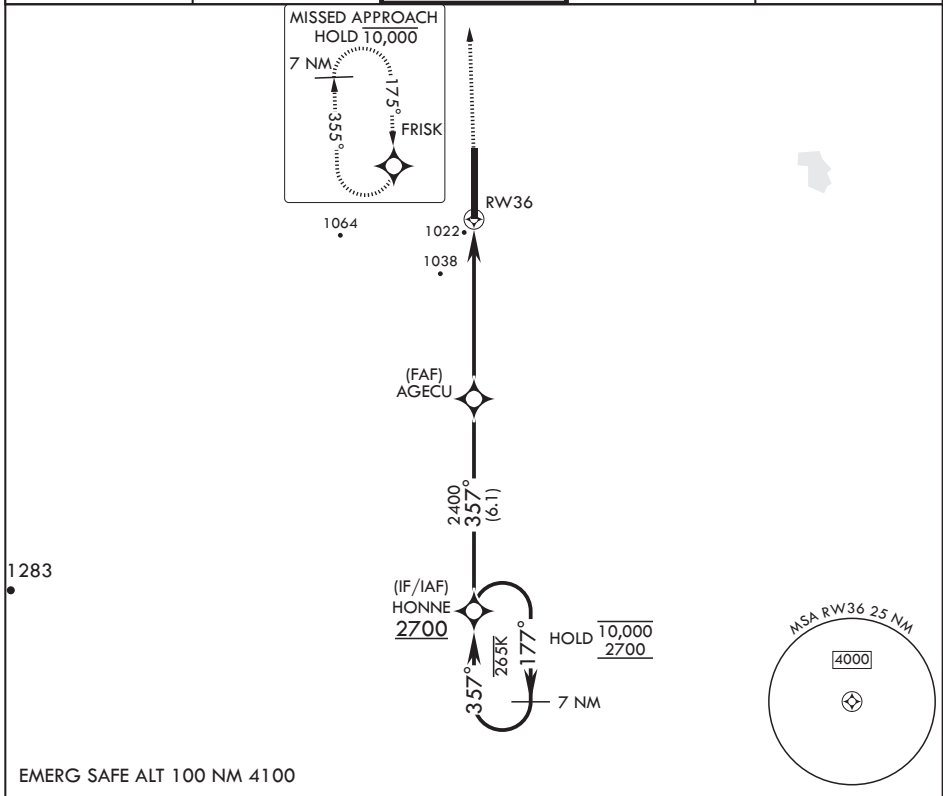
APCH CRS 357°	Rwy Idg TDZE Arprt Elev	12,351 911 911
-------------------------	-------------------------------	---

AL-5010 (USAF)

GRAND FORKS AFB (KRDR)

RNP APCH-GPS	ALSF-1	MISSED APPROACH: Climb to 1500 then climbing left turn to 3000 direct FRISK and hold.
* When ALS inop, increase CAT AB RVR to 55, vis to 1 mile; CAT CDE vis to 1 1/2 miles. ** Circling E of Rwy 18-36 not authorized.		

ATIS 273.45	APP CON 118.1 318.1	RED RIVER TOWER 124.9 349.0	GND CON 119.15 275.8	CLNC DEL 119.15 360.7
-----------------------	-------------------------------	---------------------------------------	--------------------------------	---------------------------------



CATEGORY	A	B	C	D	E
LNAV MDA*	1440/24	529 (600-1/2)	1440/55	529 (600-1)	
C CIRCLING**	1440-1	529 (600-1)	1440-1 1/2 529 (600-1 1/2)	1540-2 629 (700-2)	1560-2 1/4 649 (700-2 1/4)

GRAND FORKS, NORTH DAKOTA 47°58'N - 97°24'W GRAND FORKS AFB (KRDR)

Orig 10AUG23

RNAV (GPS) RWY 36

NC-1, 13 JUN 2024 to 11 JUL 2024

NC-1, 13 JUN 2024 to 11 JUL 2024