

GRAND FORKS, NORTH DAKOTA

TACAN RWY 18

TACAN RDR Chan 111	APCH CRS 182°	Rwy Idg 12,351	TDZE 900
		Arprt Elev 911	

AL-5010 (USAF)

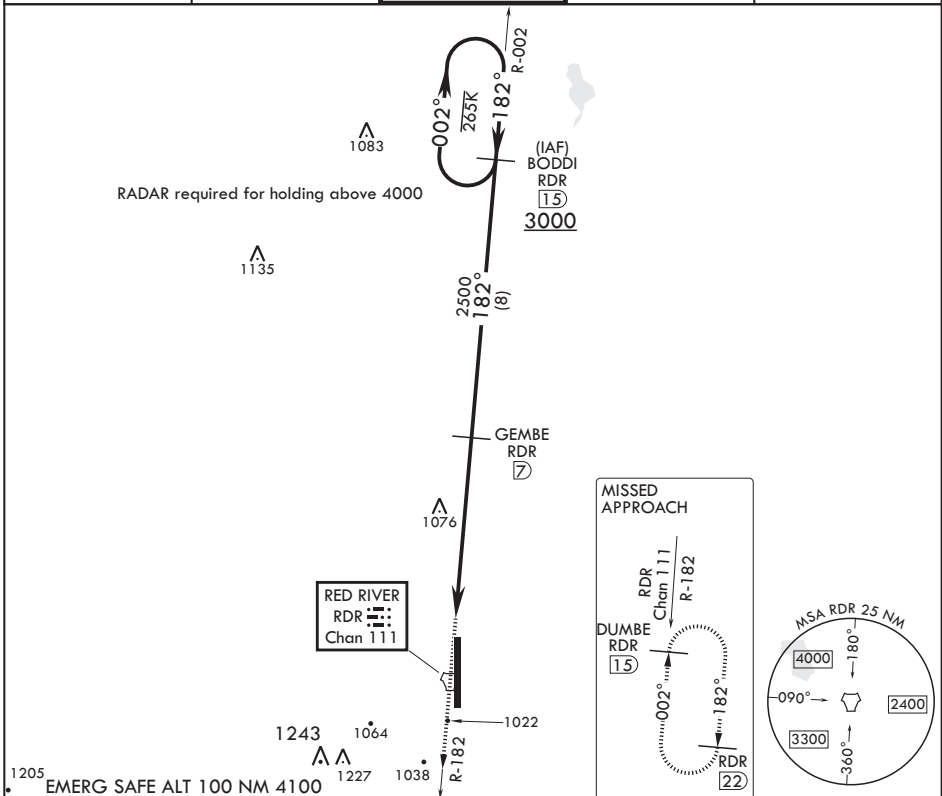
GRAND FORKS AFB (KRDR)

* When ALS inop, increase CAT AB RVR to 55, vis to 1 mile; CAT CDE vis to 1 1/4 miles.
 ** Circling E of Rwy 18-36 not authorized.

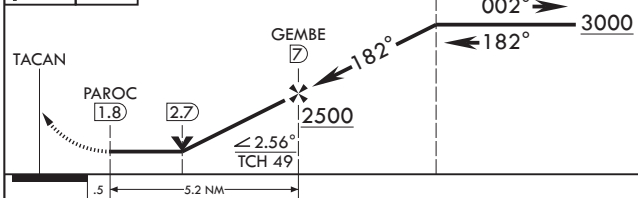


MISSED APPROACH: Climb to 3000 on RDR TACAN R-182 to DUMBE and hold.

ATIS 273.45	APP CON 118.1 318.1	RED RIVER TOWER 124.9 349.0	GND CON 119.15 275.8	CLNC DEL 119.15 360.7
----------------	------------------------	--------------------------------	-------------------------	--------------------------



3000 RDR R-182	DUMBE RDR (15)	BODDI (15)	One Minute Holding Pattern	ELEV 911	182°	TDZE 900
----------------	----------------	------------	----------------------------	----------	------	----------



CATEGORY	A	B	C	D	E
S-18*	1340/24 440 (500-½)		1340/40 440		(500-¾)
CIRCLING**	1340-1 429 (500-1)	1380-1 469 (500-1)	1380-1½ 469 (500-1½)	1540-2 629 (700-2)	1560-2¼ 649 (700-2¼)

HIRL all Rwys

GRAND FORKS, NORTH DAKOTA 47°58'N - 97°24'W GRAND FORKS AFB (KRDR)

TACAN RWY 18

Orig 10AUG23

NC-1, 13 JUN 2024 to 11 JUL 2024

NC-1, 13 JUN 2024 to 11 JUL 2024