

| | | |
|---------------------------|------------------------|------------------------|
| LOC I-JNK 109.1 | APP CRS 319° | Rwy Idg 6500 |
| | | TDZE 937 |
| | | Apt Elev 937 |

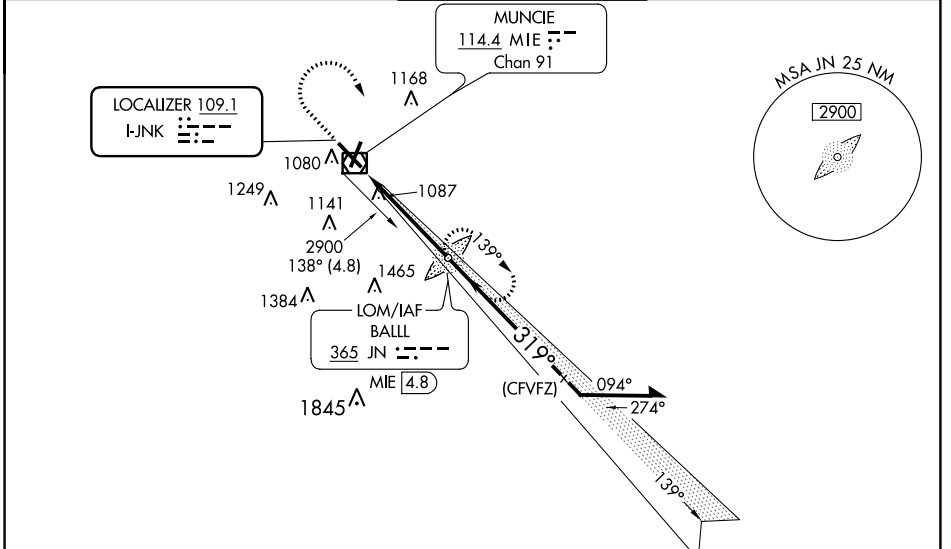
ILS or LOC RWY 32

DELAWARE COUNTY RGNL (MIE)

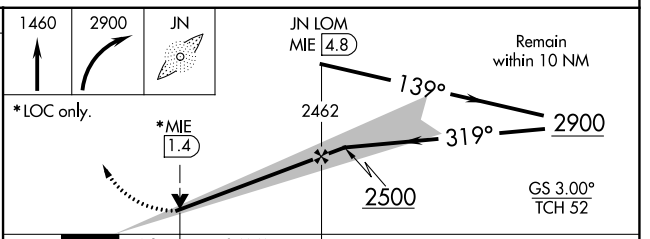
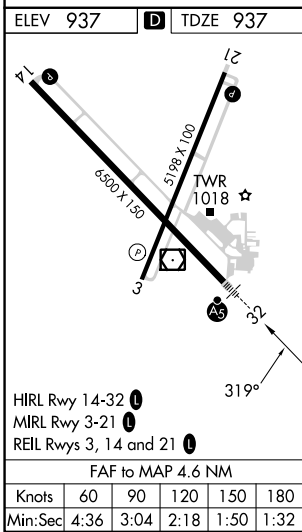
⚠ When control tower closed, except for operations with approved weather reporting use Fort Wayne altimeter setting. For inop MALS/R when using Fort Wayne altimeter setting minimums, increase S-ILS 32 visibility to 1 SM. When local altimeter setting not received, use Fort Wayne altimeter setting: increase DA to 1257 feet and visibility all Cats 1/2 SM; increase all MDAs 120 feet and visibility Cat C 5/8 SM, Cat D 1 1/8 SM. VDP NA when using Fort Wayne altimeter setting.

MALS/R
 MISSED APPROACH: Climb to 1460 then climbing right turn to 2900 direct BALL LOM and hold.

| | | | | |
|-----------------------|---|---|-------------------------|-------------------------|
| ATIS 133.25 | INDIANAPOLIS APP CON 120.65 317.8 | MUNCIE TOWER ★ 120.1 (CTAF) 0 | GND CON 121.9 | UNICOM 122.95 |
|-----------------------|---|---|-------------------------|-------------------------|



ADF or DME REQUIRED



| CATEGORY | A | B | C | D |
|---------------------------------------|------------------------|---------------|-------------------------------|-------------------------------|
| S-ILS 32 | 1137-1/2 200 (200-1/2) | | | |
| S-LOC 32 | 1380-1/2 | 443 (500-1/2) | 1380-7/8 | 443 (500-7/8) |
| C CIRCLING | 1460-1 | 523 (600-1) | 1500-1 1/2 563 (600-1 1/2) | 1600-2 663 (700-2) |
| FORT WAYNE ALTIMETER SETTING MINIMUMS | | | | |
| S-ILS 32 | 1257-5/8 320 (400-5/8) | | | |
| S-LOC 32 | 1520-1/2 | 583 (600-1/2) | 1520-1 1/2 583 (600-1 1/2) | 1520-2 1/2 583 (600-2 1/2) |
| C CIRCLING | 1580-1 | 643 (700-1) | 1600-1 3/4 663 (700-1 3/4) | 1720-2 1/2 783 (800-2 1/2) |

EC-2, 13 JUN 2024 to 11 JUL 2024

EC-2, 13 JUN 2024 to 11 JUL 2024