

COPTER TACAN 125°

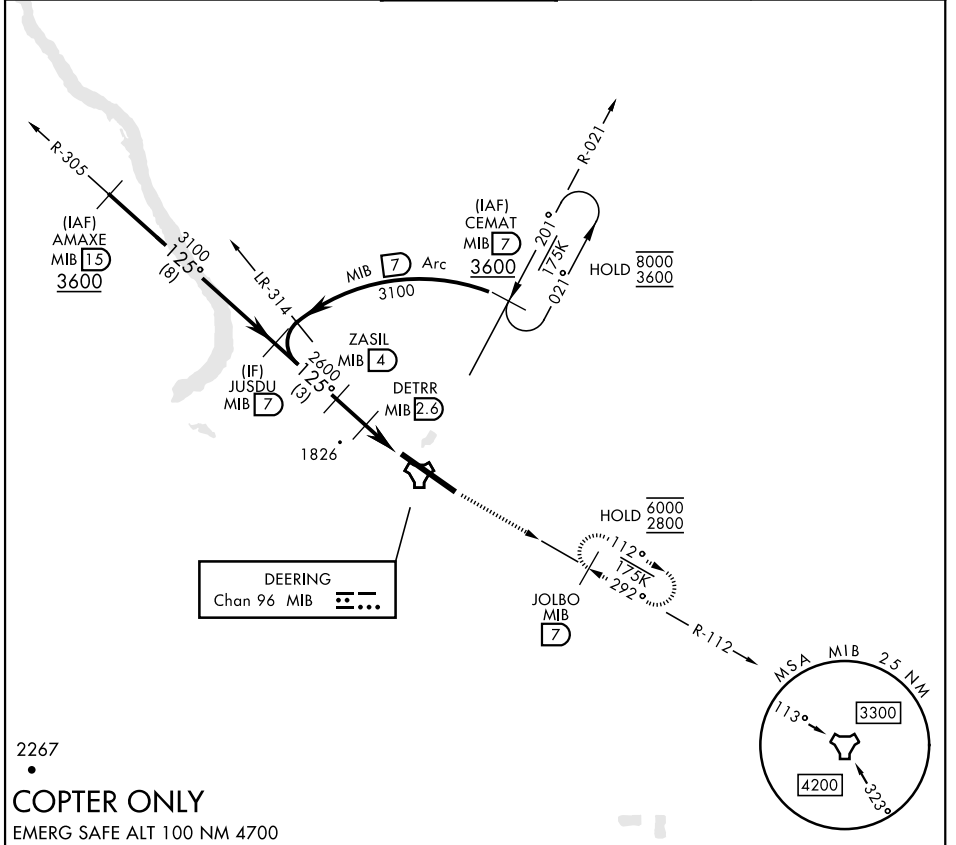
TACAN MIB Chan 96	APCH CRS 125°	Rwy Idg 13,198 TDZE 1666 Arpt Elev 1666
-----------------------------	-------------------------	--

[USAF]

MINOT AFB (KMIB)

* When ALS inop, increase RVR to 28 and vis to ½ mile.	ALSF-1 	MISSED APPROACH: Climb to 3600 via MIB TACAN R-112 direct JOLBO and hold.
--	------------	---

ATIS ★ 278.8	MINOT APP CON 119.6 363.8	MINOT TOWER ★ 120.65 253.5	GND CON 134.0 275.8	CLNC DEL 326.2
------------------------	-------------------------------------	--------------------------------------	-------------------------------	--------------------------



2267
COPTER ONLY
 EMERG SAFE ALT 100 NM 4700

JUSDU MIB 7 3100	ZASIL MIB 4 2600	DETRR MIB 2.6 2200	ZELOL MIB 1.1	3600 MIB R-112	JOLBO MIB 7	ELEV 1666	TDZE 1666
CATEGORY	COPTER						
H-125°*	2080/12	414	(500-¼)				
						HIRL Rwy 12-30	

COPTER TACAN 125°

NC-1, 13 JUN 2024 to 11 JUL 2024

NC-1, 13 JUN 2024 to 11 JUL 2024