

MINOT, NORTH DAKOTA

# RNAV (GPS) Y RWY 30

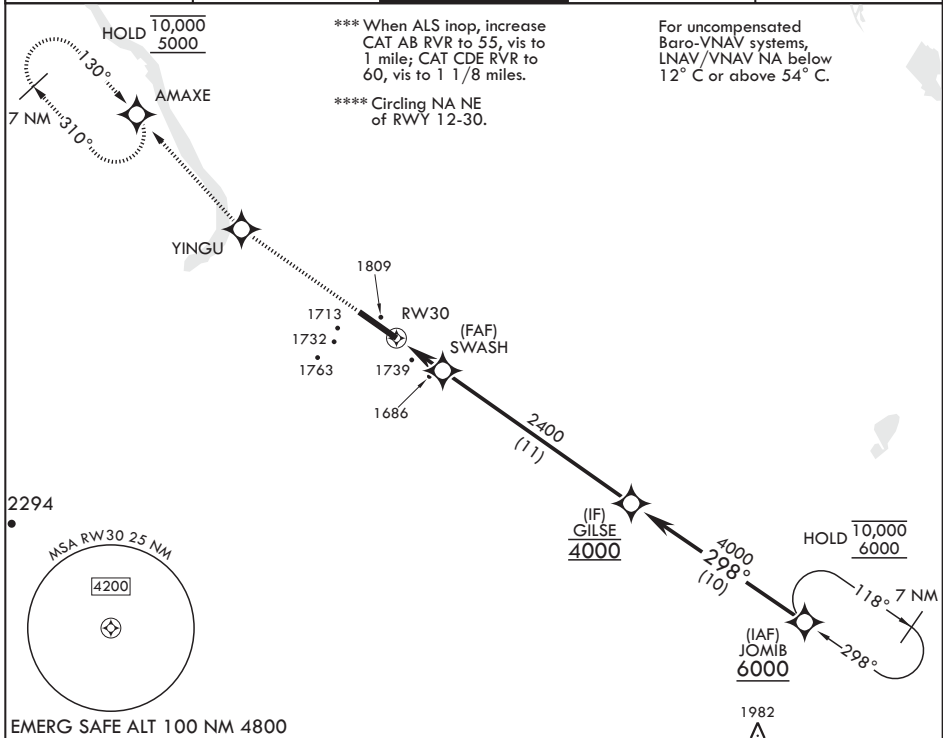
WAAS CH <b>47084</b> W30B	APCH CRS <b>298°</b>	Rwy ldg TDZE Arprt Elev	<b>13,198</b> <b>1646</b> <b>1666</b>
---------------------------------	-------------------------	-------------------------------	---

AL-5013 (USAF)

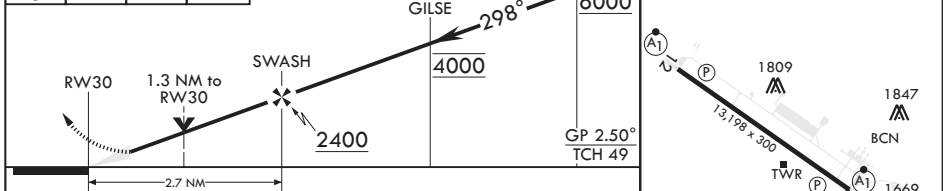
MINOT AFB (KMIB)

RNP APCH - GPS	ALSF-1	MISSED APPROACH: Climb to 5000 direct YINGU, track 310° to AMAXE and hold.
▼ * When ALS inop, increase RVR to 40, vis to 3/4 mile. ** When ALS inop, increase RVR to 60, vis to 1 1/8 miles.		

ATIS* <b>278.8</b>	APP CON <b>119.6 363.8</b>	TOWER* <b>120.65 253.5</b>	GND CON <b>134.0 275.8</b>	CLNC DEL <b>326.2</b>
-----------------------	-------------------------------	-------------------------------	-------------------------------	--------------------------



5000	YINGU	tr 310°	AMAXE	JOMIB	ELEV 1666	TDZE 1646
------	-------	---------	-------	-------	-----------	-----------



CATEGORY	A	B	C	D	E
LPV DA*	1846/24		200	(200-1/2)	
LNAV/VNAV DA**	2027/35		381	(400-5/8)	
LNAV MDA***	2040/24 394 (400-1/2)		2040/40	394 (400-3/4)	
CIRCLING****	2120-1	2140-1	2180-1 1/2	2320-2	2320-2 1/4
	454 (500-1)	474 (500-1)	514 (600-1 1/2)	654 (700-2)	654 (700-2 1/4)

HIRL all Rwys

MINOT, NORTH DAKOTA

48°25'N - 101°21'W

MINOT AFB (KMIB)

Orig 15JUN23

# RNAV (GPS) Y RWY 30

NC-1, 13 JUN 2024 to 11 JUL 2024

NC-1, 13 JUN 2024 to 11 JUL 2024