

| | | |
|--|------------------------|---|
| WAAS CH 99413 W18A | APP CRS 179° | Rwy Idg 6508 TDZE 8 Apt Elev 9 |
|--|------------------------|---|

RNAV (GPS) RWY 18

HOUMA-TERREBONNE (HUM)

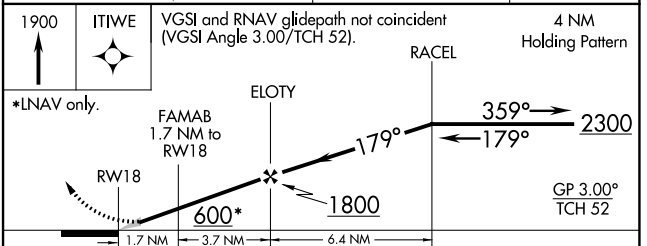
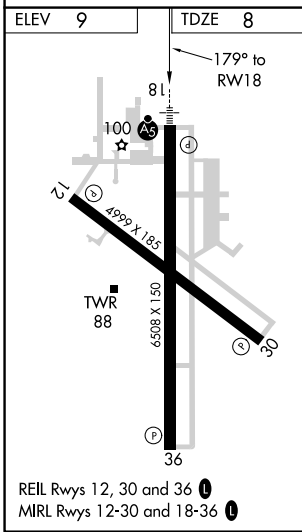
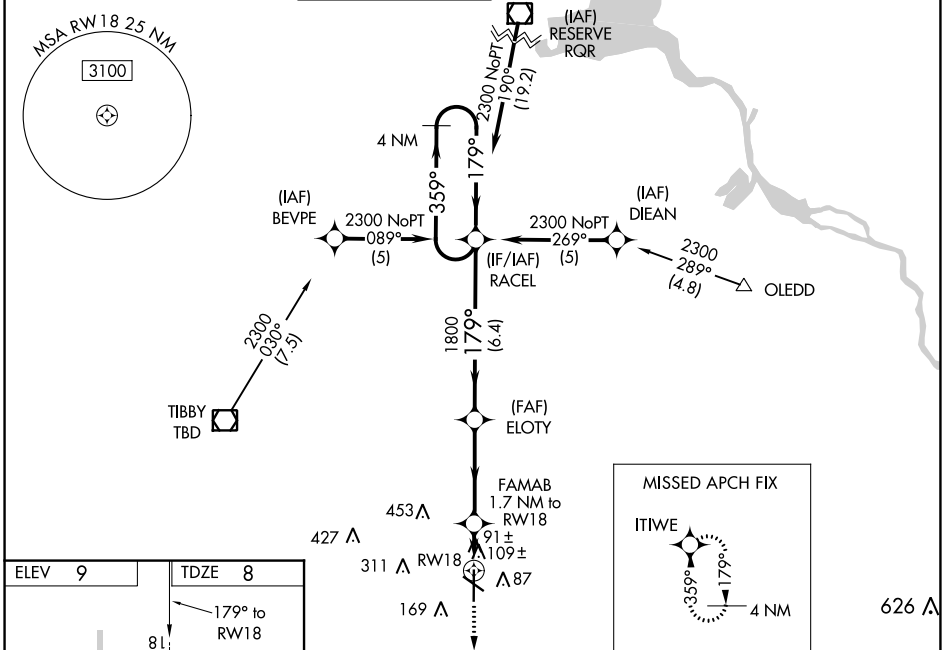
⚠ Baro-VNAV NA when using Louis Armstrong New Orleans Intl altimeter setting. For uncompensated Baro-VNAV systems, LNAV/VNAV NA below -15°C (5°F) or above 49°C (120°F). DME/DME RNP-0.3 NA. When local altimeter setting not received, use Louis Armstrong New Orleans Intl altimeter setting: increase LPV DA to 285, increase LNAV/VNAV DA to 526 and all visibilities ½ SM; increase all MDAs 80 feet and visibility Cats C and D ¼ SM. For inop ALS when using Louis Armstrong New Orleans Intl altimeter setting increase all LPV visibilities to ¾ SM, increase all LNAV/VNAV visibilities and LNAV Cats C and D visibility to 1 ¾ SM.

MALSR



MISSED APPROACH:
Climb to 1900 direct ITIWE and hold.

| | | | | | |
|-----------------------|--|--|---------------------------|---|-------------------------|
| ATIS 120.25 | NEW ORLEANS APP CON 118.9 350.35 | HOUMA TOWER ★ 125.3 (CTAF) 346.3 | GND CON 123.875 | CLNC DEL 118.9 (When twr closed) | UNICOM 122.95 |
|-----------------------|--|--|---------------------------|---|-------------------------|



| CATEGORY | A | B | C | D |
|-------------------|-------|-------------|------------------------|------------------------|
| LPV DA | | 208-½ | 200 (200-½) | |
| LNAV/VNAV DA | | 449-¾ | 441 (500-¾) | |
| LNAV MDA | 440-½ | 432 (500-½) | 440-¾ | 432 (500-¾) |
| C CIRCLING | 480-1 | 471 (500-1) | 760-2¼ 751 (800-2¼) | 760-2½ 751 (800-2½) |

SC-4, 13 JUN 2024 to 11 JUL 2024

SC-4, 13 JUN 2024 to 11 JUL 2024