

WAAS CH <b>61013</b> <b>W30A</b>	APP CRS <b>304°</b>	Rwy Idg <b>4999</b> TDZE <b>9</b> Apt Elev <b>9</b>
--	------------------------	---

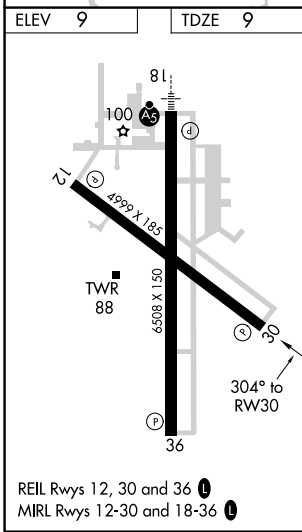
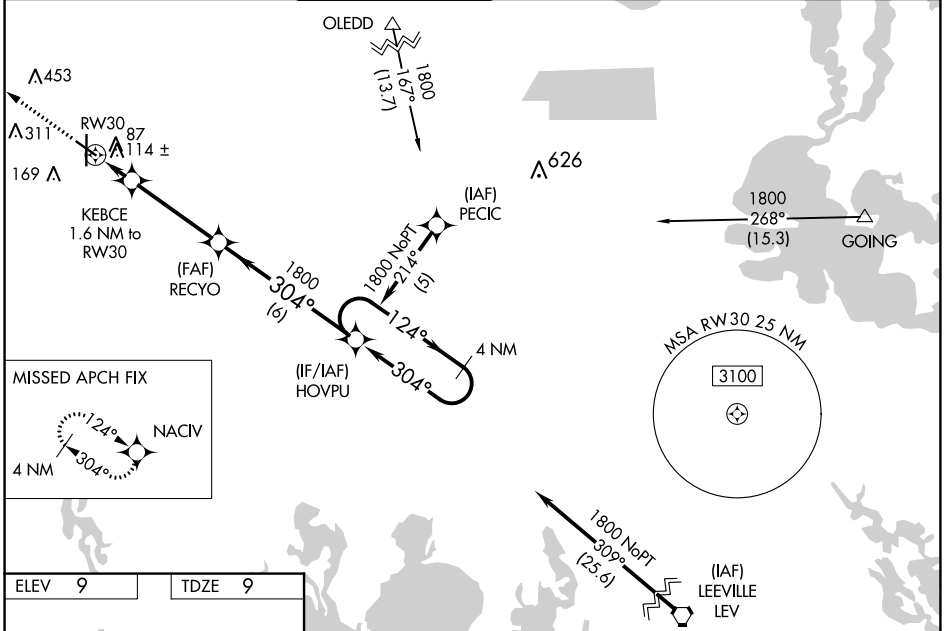
# RNAV (GPS) RWY 30

HOUMA-TERREBONNE (HUM)

**⚠** For uncompensated Baro-VNAV systems, LNAV/VNAV NA below -15°C (5°F) or above 49°C (120°F). DME/DME RNP-0,3 NA. Visibility reduction by helicopters NA.  
**⚠** When local altimeter setting not received, use Louis Armstrong New Orleans Intl altimeter setting: increase LPV DA to 336, LNAV/VNAV DA to 489, and all visibilities ¼ SM; increase all MDAs 80 feet and visibility Cats C and D ¾ SM. Baro-VNAV NA when using Louis Armstrong New Orleans Intl altimeter setting.

MISSED APPROACH: Climb to 1800 direct NACIV and hold.

ATIS <b>120.25</b>	NEW ORLEANS APP CON <b>118.9 350.35</b>	HOUMA TOWER ★ <b>125.3 (CTAF) 0 346.3</b>	GND CON <b>123.875</b>	CLNC DEL <b>118.9</b> (When twr closed)	UNICOM <b>122.95</b>
-----------------------	--	--	---------------------------	---	-------------------------



ELEV 9	TDZE 9	1800 NACIV			
		VGSi and RNAV glidepath not coincident (VGSi Angle 3.00°/TCH 39).		4 NM Holding Pattern	
* LNAV only		KEBCE 1.6 NM to RW30	RECYO	HOVPU	
		560*	1800	1800	GP 3.00° TCH 45
CATEGORY	A	B	C	D	
LPV DA		259-¾	250 (300-¾)		
LNAV/VNAV DA		412-1⅛	403 (500-1⅛)		
LNAV MDA		380-1	371 (400-1)		
<b>C</b> CIRCLING	480-1	471 (500-1)	760-2¼ 751 (800-2¼)	760-2½ 751 (800-2½)	

SC-4, 13 JUN 2024 to 11 JUL 2024

SC-4, 13 JUN 2024 to 11 JUL 2024