

| | | |
|--|------------------------|---|
| WAAS CH 56413 W36A | APP CRS 359° | Rwy Idg 6508 TDZE 8 Apt Elev 9 |
|--|------------------------|---|

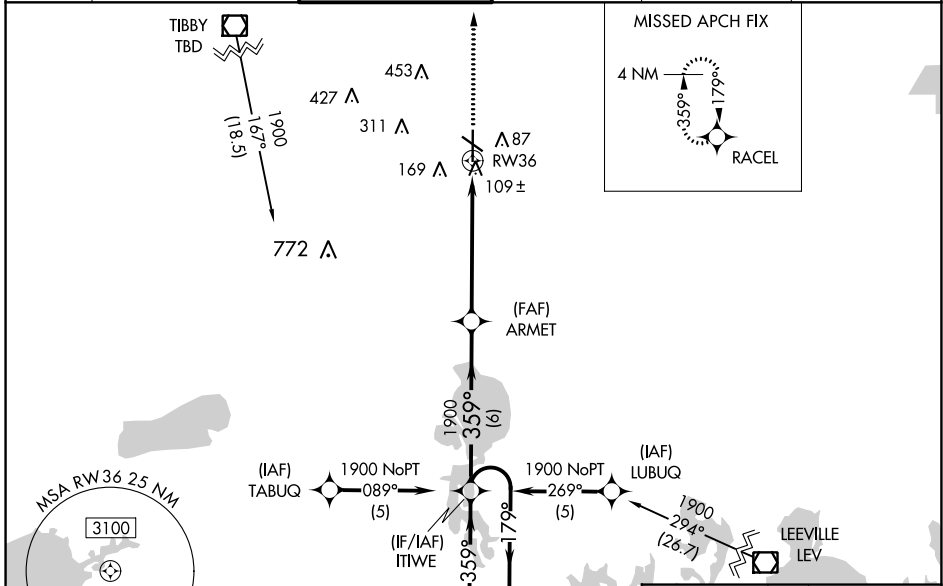
RNAV (GPS) RWY 36

HOUMA-TERREBONNE (HUM)

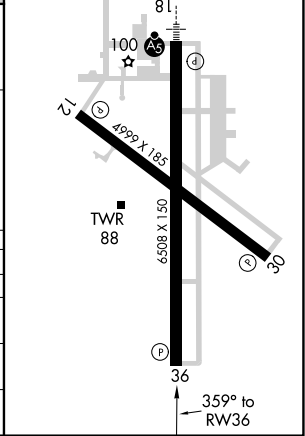
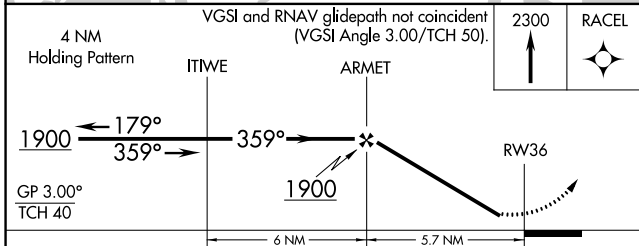
⚠ Baro-VNAV NA when using Louis Armstrong New Orleans Intl altimeter setting.
⚠ For uncompensated Baro-VNAV systems, LNAV/VNAV NA below -15°C (5°F) or above 49°C (120°F). DME/DME RNP-0.3 NA. Visibility reduction by helicopters NA. When local altimeter setting not received, use Louis Armstrong New Orleans Intl altimeter setting: increase LPV DA to 408, LNAV/VNAV DA to 518, and all visibilities 1/8 SM; increase all MDAs 80 feet and visibility Cats C and D 1/4 SM.

MISSED APPROACH: Climb to 2300 direct RACEL and hold.

| | | | | | |
|-----------------------|--|--|---------------------------|---|-------------------------|
| ATIS 120.25 | NEW ORLEANS APP CON 118.9 350.35 | HOUMA TOWER ★ 125.3 (CTAF) 346.3 | GND CON 123.875 | CLNC DEL 118.9 (When twr closed) | UNICOM 122.95 |
|-----------------------|--|--|---------------------------|---|-------------------------|



| | |
|-----------------------------------|---------------|
| ELEV 9 | TDZE 8 |
| REIL Rwy 12, 30 and 36 ① | |
| MIRL Rwy 12-30 and 18-36 ① | |



| CATEGORY | A | B | C | D |
|--------------|-------|-------------|------------------------------|------------------------------|
| LPV DA | | 331-1 | 323 (400-1) | |
| LNAV/VNAV DA | | 441-1 1/4 | 433 (500-1 1/4) | |
| LNAV MDA | 460-1 | 452 (500-1) | 460-1 3/8 | 452 (500-1 3/8) |
| CIRCLING | 480-1 | 471 (500-1) | 760-2 1/4 751 (800-2 1/4) | 760-2 1/2 751 (800-2 1/2) |

SC-4, 13 JUN 2024 to 11 JUL 2024

SC-4, 13 JUN 2024 to 11 JUL 2024