

LOC I-ISO	APP CRS	Rwy Idg	10960
111.3	050°	TDZE	93
		Apt Elev	93

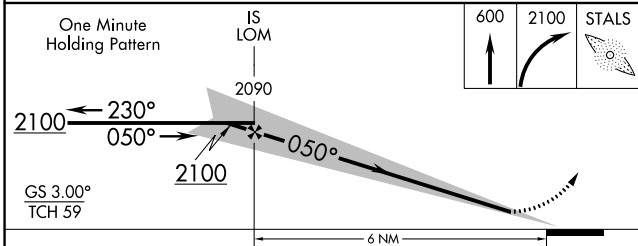
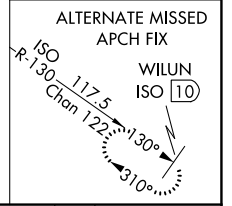
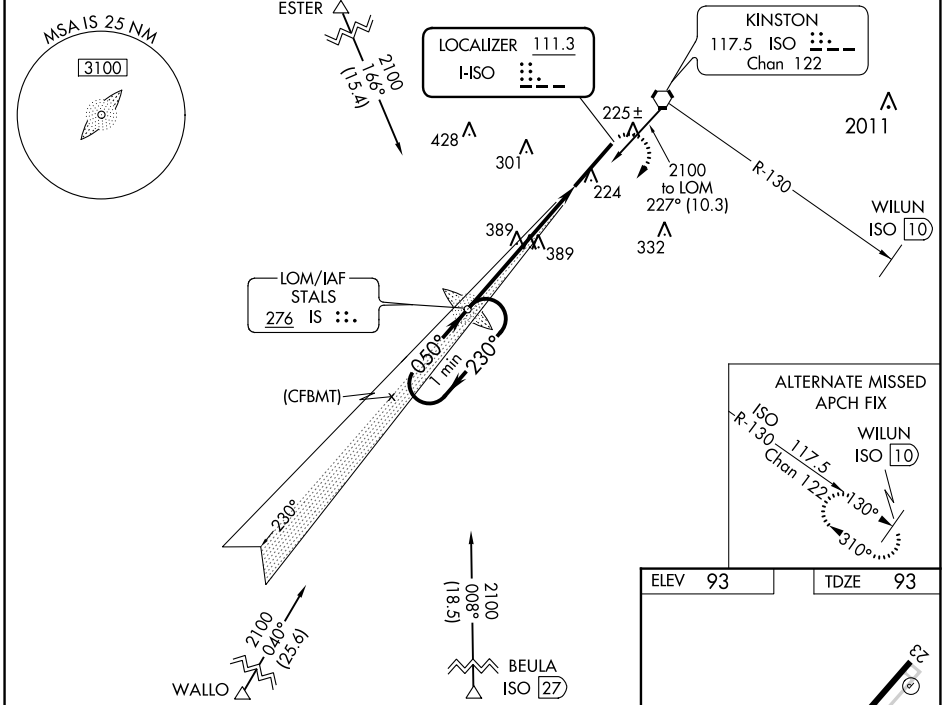
ILS or LOC RWY 5

KINSTON RGNL JETPORT AT STALLINGS FLD (ISO)

ADF Required. When local altimeter setting not received, use Seymour Johnson AFB altimeter setting and increase DA to 336; increase all MDA 60 feet and S-LOC 5 Cats C and D visibility 1/8 mile and Circling Cat D visibility 1/4 mile. For inop MALS, increase S-LOC 5 Cats C and D visibility to 1 1/8 mile. For inop MALS when using Seymour Johnson AFB altimeter setting, increase S-LOC 5 Cats C and D visibility to 1 3/4 mile.
**** RVR 1800 authorized with use of FD or AP or HUD to DA, NA when using Seymour Johnson AFB altimeter setting.**

MALS
 MISSED APPROACH:
 Climb to 600 then climbing right turn to 2100 direct STALS LOM and hold.

AWOS-3 132.75	SEYMOUR JOHNSON APP CON * 127.3 273.6	KINSTON TOWER * 120.6 (CTAF) 0 335.55	GND CON 121.9	UNICOM 122.95
-------------------------	---	---	-------------------------	-------------------------



ELEV 93	TDZE 93
---------	---------

TWR 173
 050° 6 NM from FAF
 REIL Rwy 23
 HIRL Rwy 5-23
 FAF to MAP 6 NM

Knots	60	90	120	150	180
Min:Sec	6:00	4:00	3:00	2:24	2:00

CATEGORY	A	B	C	D
S-ILS 5 **		293/24	200 (200-1/2)	
S-LOC 5	640/24	547 (600-1/2)	640/60	547 (600-1 1/4)
CIRCLING	640-1	547 (600-1)	700-1 3/4 607 (700-1 3/4)	740-2 647 (700-2)

ILS or LOC RWY 5

SE-2, 13 JUN 2024 to 11 JUL 2024

SE-2, 13 JUN 2024 to 11 JUL 2024