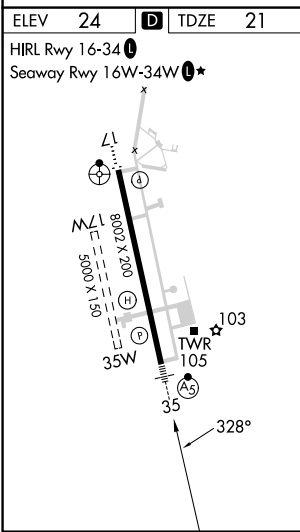
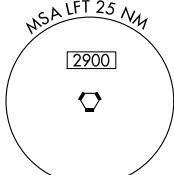
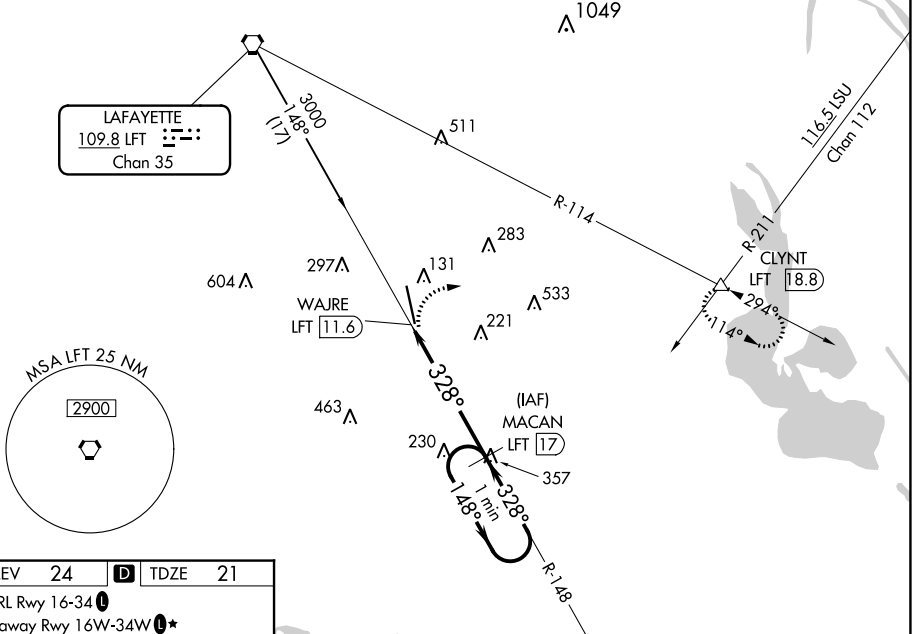


VORTAC LFT 109.8	APP CRS 328°	Rwy Idg TDZE Apt Elev	8002 21 24
Chan 35			

VOR RWY 35
ACADIANA RGNL (A.R.A.)

<p>Circling NA to Rwy's 17W and 35W. DME required. Inop table does not apply.</p>		<p>MALS</p>	<p>MISSED APPROACH: Climbing right turn to 2000 on heading 080° and LFT R-114 to CLYNT INT/LFT 18.8 DME and hold.</p>				
ASOS 133.325	LAFAYETTE APP CON * 121.1 268.7	ACADIANA TOWER * 125.0 (CTAF) 0 239.3	GND CON 121.7	CLNC DEL 121.7	CLNC DEL 118.05 (when twr closed)	UNICOM 122.95	0 * 122.7

DME REQUIRED



<p>2000 hdg 080°</p>	LFT R-114	CLYNT	MACAN LFT 17	One Minute Holding Pattern	
<p>WJARE LFT 11.6</p>		LFT 13	<p>3.00° TCH 52</p>	<p>1800</p>	
<p>1.5</p>		<p>4 NM</p>			
CATEGORY	A	B	C	D	E
S-35	540-1/2	519 (600-1/2)	540-1 3/8	519 (600-1 3/8)	
CIRCLING	540-1	516 (600-1)	600-1 1/2 576 (600-1 1/2)	680-2 656 (700-2)	900-3 876 (900-3)

SC-4, 13 JUN 2024 to 11 JUL 2024

SC-4, 13 JUN 2024 to 11 JUL 2024