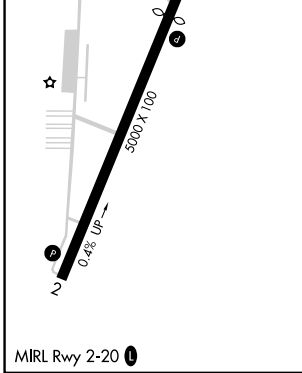
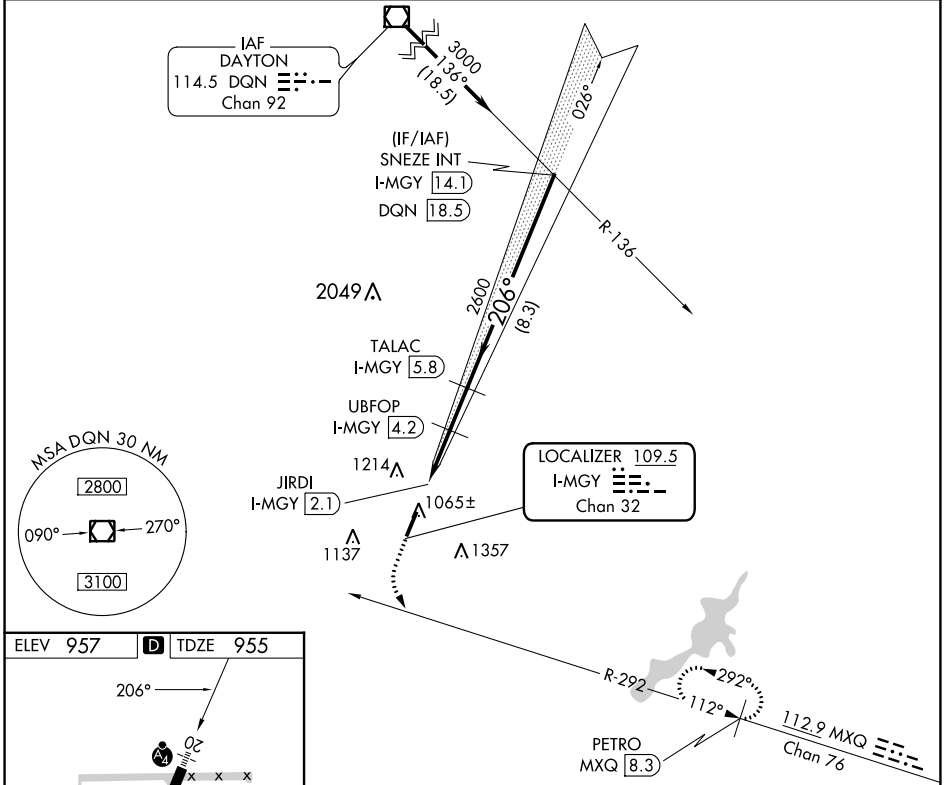


LOC/DME I-MGY 109.5 Chan 32	APP CRS 206°	Rwy ldg 4410 TDZE 955 Apt Elev 957
-------------------------------------------------	------------------------	---------------------------------------------------------------

LOC RWY 20

DAYTON/WRIGHT BROTHERS (MGY)

DME required.		MALS	MISSED APPROACH: Climb to 1600 then climbing left turn to 3000 on heading 118° and MXQ VOR/DME R-292 to PETRO MXQ 8.3 DME and hold.
ASOS 118.375	COLUMBUS APP CON 118.85 269.275	CLNC DEL 119.4	UNICOM 122.8 (CTAF) 0



1600	3000	MXQ R-292	PETRO MXQ 8.3	TALAC I-MGY 5.8	SNEZE INT I-MGY 14.1
↑	hdg 118°				
UBPOP I-MGY 4.2		JIRDI I-MGY 2.1	TALAC I-MGY 5.8	SNEZE INT I-MGY 14.1	
JIRDI I-MGY 2.1		2040	2600	3000	
1.2		2.1 NM	1.6 NM	8.3 NM	
CATEGORY	A	B	C	D	
S-LOC 20	1320-1½		365 (400-1½)		
CIRCLING	1440-1½ 483 (500-1½)	1520-1½ 563 (600-1½)	1660-2 703 (800-2)	1660-2¼ 703 (800-2¼)	

EC-2, 13 JUN 2024 to 11 JUL 2024

EC-2, 13 JUN 2024 to 11 JUL 2024