

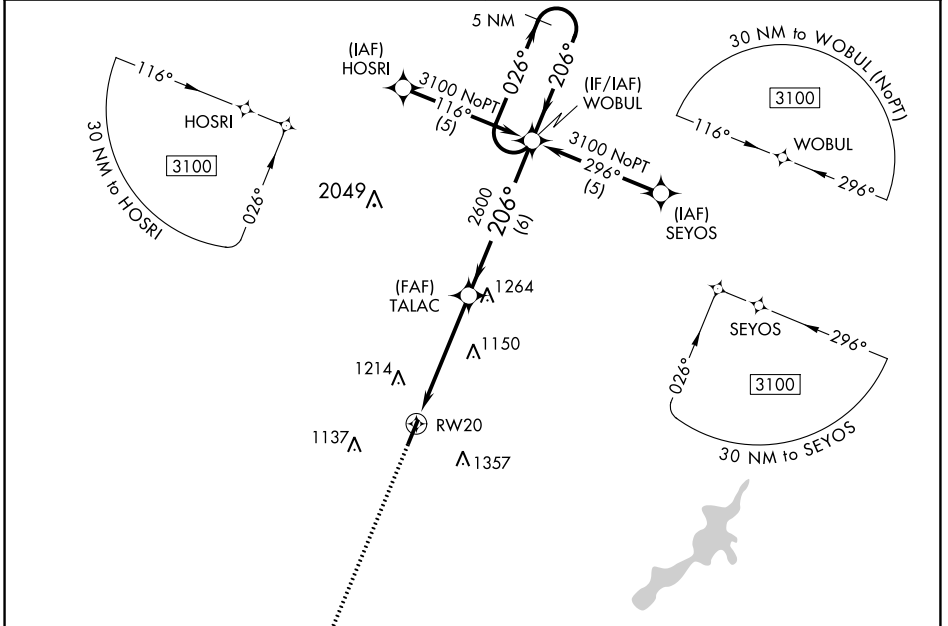
| | | | |
|--|------------------------|---|---|
| WAAS CH 93601 W20A | APP CRS 206° | Rwy Idg TDZE 955 Apt Elev 957 | 4410 955 957 |
|--|------------------------|---|---|

RNAV (GPS) RWY 20

DAYTON/WRIGHT BROTHERS (MGY)

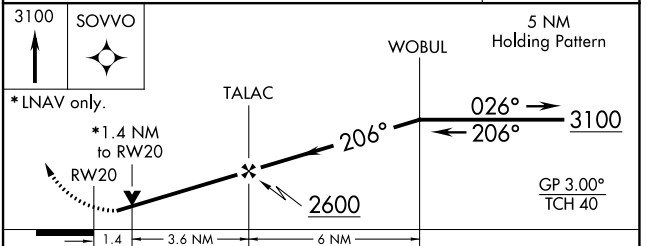
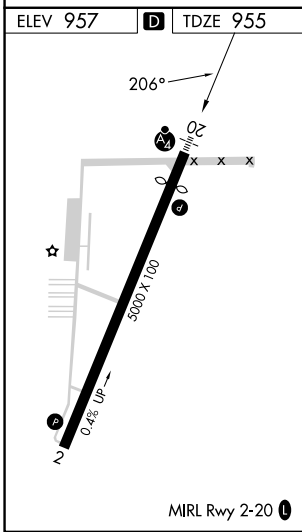
| | | |
|--|------|--|
| RNP APCH: | MALS | MISSED APPROACH: Climb to 3100 direct SOVVO and hold. |
| <p>▼ Inoperative table does not apply. When local altimeter setting not received, use James M Cox Dayton Intl altimeter setting and increase all DAs/MDAs 60 feet and Circling Cat C/D visibility ¼ SM. Rwy 20 helicopter visibility reduction below ¾ SM NA. VDP NA when using James M Cox Dayton Intl altimeter setting.</p> | | |

| | | | |
|------------------------|---|--------------------------|-------------------------------|
| ASOS 118.375 | COLUMBUS APP CON 118.85 269.275 | CLNC DEL 119.4 | UNICOM 122.8 (CTAF) |
|------------------------|---|--------------------------|-------------------------------|



EC-2, 13 JUN 2024 to 11 JUL 2024

EC-2, 13 JUN 2024 to 11 JUL 2024



| CATEGORY | A | B | C | D |
|--|-------------------------|-------------------------|-------------------------|-------------------------|
| LPV DA | 1294-1¼ 339 (400-1¼) | | | |
| LNAV MDA | 1440-1 | 485 (500-1) | 1440-1½ 485 (500-1½) | 1440-1½ 485 (500-1½) |
| <input checked="" type="checkbox"/> CIRCLING | 1480-1¼ 523 (600-1¼) | 1520-1¼ 563 (600-1¼) | 1660-2 703 (800-2) | 1660-2¼ 703 (800-2¼) |