

APP CRS	Rwy Idg	3975
289°	TDZE	118
	Apt Elev	118

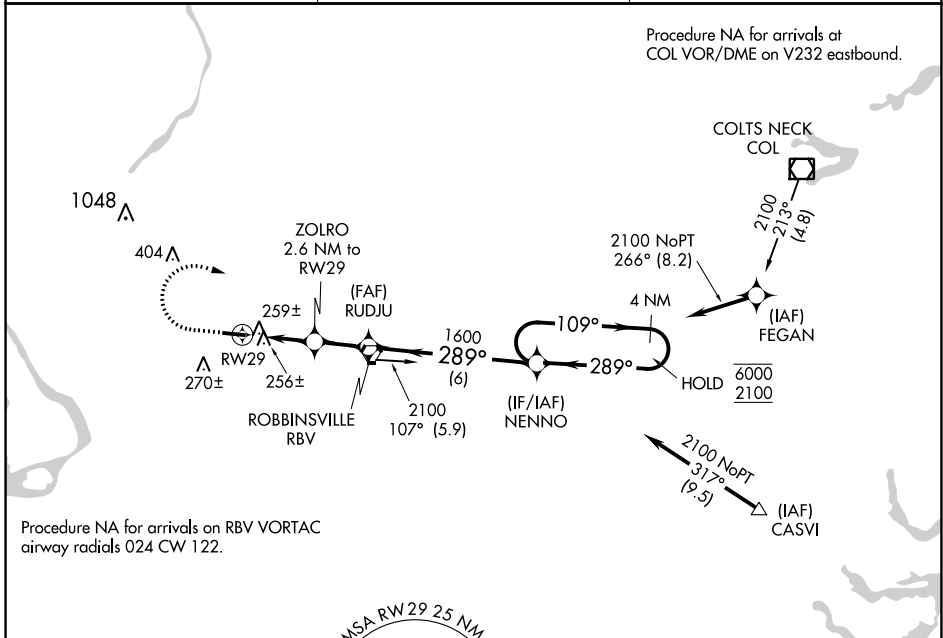
RNAV (GPS) RWY 29

TRENTON-ROBBINSVILLE (N87)

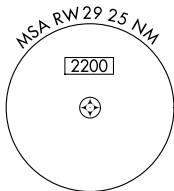
RNP APCH. Procedure NA at night. Rwy 29 helicopter visibility reduction below 1 SM NA. Use Wrightstown altimeter setting.

MISSED APPROACH: Climb to 1000, then climbing right turn to 2100 direct NENNO and hold.

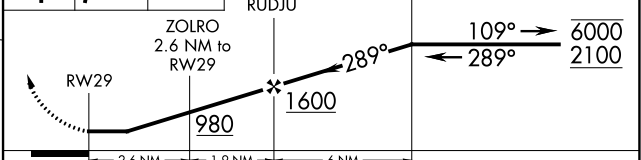
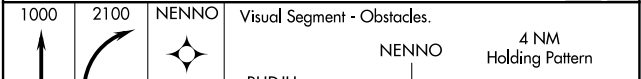
MC GUIRE APP CON 126.475 363.8	UNICOM 123.0 (CTAF)	123.3 0
--	-------------------------------	----------------



Procedure NA for arrivals on RBV VORTAC airway radials 024 CW 122.



ELEV 118	TDZE 118
----------	----------



CATEGORY	A	B	C	D
LNAV MDA	540-1	422 (500-1)	540-1½	422 (500-1½)
CIRCLING	680-1	562 (600-1)	680-1½ 562 (600-1½)	760-2 642 (700-2)

NE-2, 13 JUN 2024 to 11 JUL 2024

NE-2, 13 JUN 2024 to 11 JUL 2024