

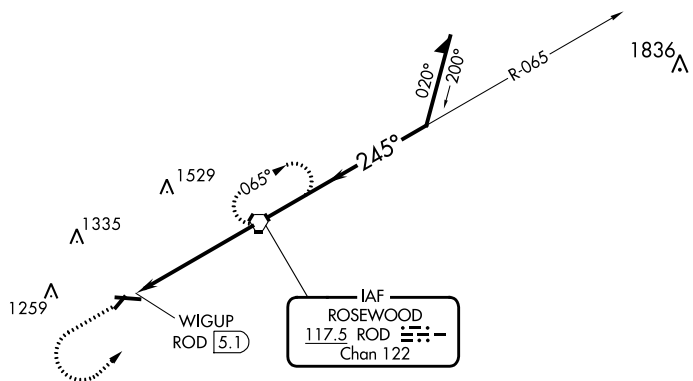
VORTAC ROD 117.5 Chan 122	APP CRS 245°	Rwy Idg TDZE Apt Elev	N/A N/A 1044
---	------------------------	-----------------------------	---

VOR-A
SIDNEY MUNI (SCA)

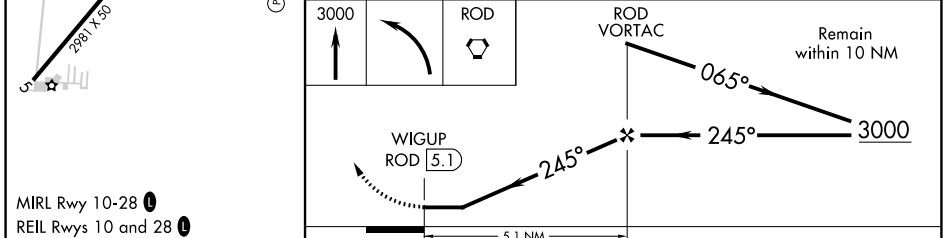
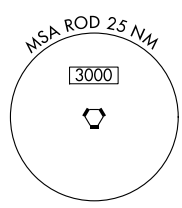
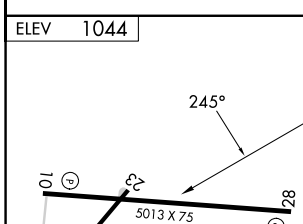
NA When local altimeter setting not received, use James M Cox Dayton Intl altimeter setting and increase all MDAs 60 feet and increase Cat C visibility ¼ mile. Night Landing: Rwy 28 operational VGSI required, remain on or above VGSI glidepath until threshold. Helicopter visibility reduction below 1 SM NA.

MISSED APPROACH: Climb to 3000 then left turn direct ROD VORTAC and hold.

AWOS-3 120.425	COLUMBUS APP CON 134.45 294.5	UNICOM 123.05 (CTAF)
--------------------------	---	--------------------------------



NoPT for arrivals on ROD Vortac airway radials 314 CW 088.



MIRL Rwy 10-28
REIL Rws 10 and 28

FAF to MAP 5.1 NM					
Knots	60	90	120	150	180
Min:Sec	5:06	3:24	2:33	2:02	1:42

CATEGORY	A	B	C	D
<input checked="" type="checkbox"/> CIRCLING	1540-1	496 (500-1)	1640-1½ 596 (600-1½)	1640-2 596 (600-2)

SIDNEY, OHIO
Orig 12NOV15

40°14'N-84°09'W

SIDNEY MUNI (SCA)
VOR-A

EC-2, 13 JUN 2024 to 11 JUL 2024

EC-2, 13 JUN 2024 to 11 JUL 2024