

WAAS CH 45521 W05A	APP CRS 048°	Rwy Idg TDZE Apt Elev	5000 8 9
--	------------------------	-----------------------------	-------------------------------------

RNAV (GPS) RWY 5

GROTON-NEW LONDON (GON)

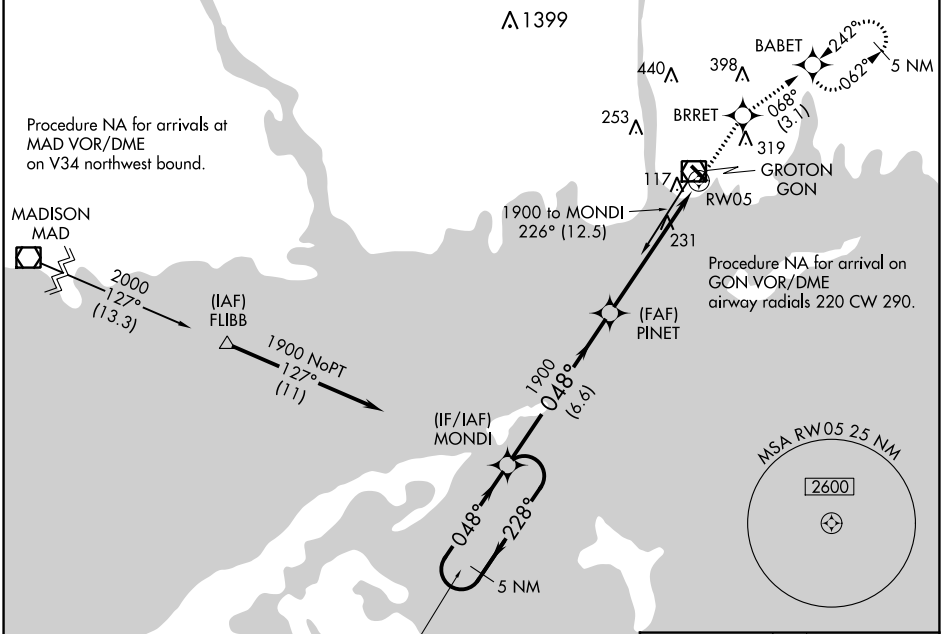
RNP APCH - GPS.

⚠ Circling Rwy 15 NA at night. For uncompensated Baro-VNAV systems, procedure NA below -15°C or above 54°C. For inop ALS, increase LPV all Cats visibility to RVR 4500 and LNAV Cats visibility C/D to 1%.
⚠ Procedure NA for arrivals at MAD VOR/DME on V34 northwest bound.



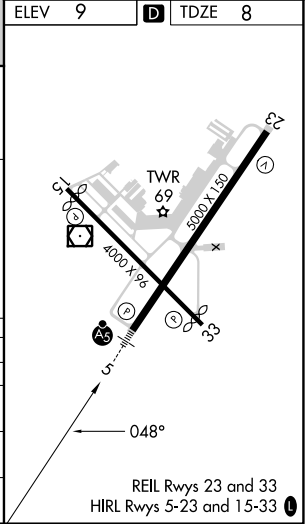
MISSED APPROACH: Climb to 2100 direct BRRET and on track 068° to BABET and hold, continue climb-in-hold to 2100.

ATIS 127.0	PROVIDENCE APP CON ★ 125.75 319.2	GROTON TOWER ★ 125.6 (CTAF) 0 236.775	GND CON 121.65 236.775	CLNC DEL 119.85 (when twr closed)	CLNC DEL 121.65
----------------------	---	---	----------------------------------	--	---------------------------



ELEV	9	TDZE	8
------	---	------	---

5 NM Holding Pattern	<table border="1"> <tr> <td>2100</td> <td>BRRET</td> <td>BABET</td> </tr> <tr> <td>↑</td> <td>✦</td> <td>✦</td> </tr> <tr> <td></td> <td>tr</td> <td>068°</td> </tr> </table>				2100	BRRET	BABET	↑	✦	✦		tr	068°
	2100	BRRET	BABET										
	↑	✦	✦										
		tr	068°										
	<p>MONDI PINET</p> <p>6000 ← 228° 1900 1900</p> <p>1900 048° → 048°</p> <p>GP 3.00° TCH 42</p> <p>1.4 NM to RW05</p> <p>6.6 NM 4.3 NM 1.4 NM</p>												
CATEGORY	A	B	C	D									
LPV DA		292/24	284 (300-½)										
LNAV/VNAV DA		533/55	525 (600-1)										
LNAV MDA	500/24	492 (500-½)	500/50	492 (500-1)									
CIRCLING	580-1 571 (600-1)	620-1 611 (700-1)	700-2 691 (700-2)	840-2¾ 831 (900-2¾)									



NE-1, 13 JUN 2024 to 11 JUL 2024

NE-1, 13 JUN 2024 to 11 JUL 2024