

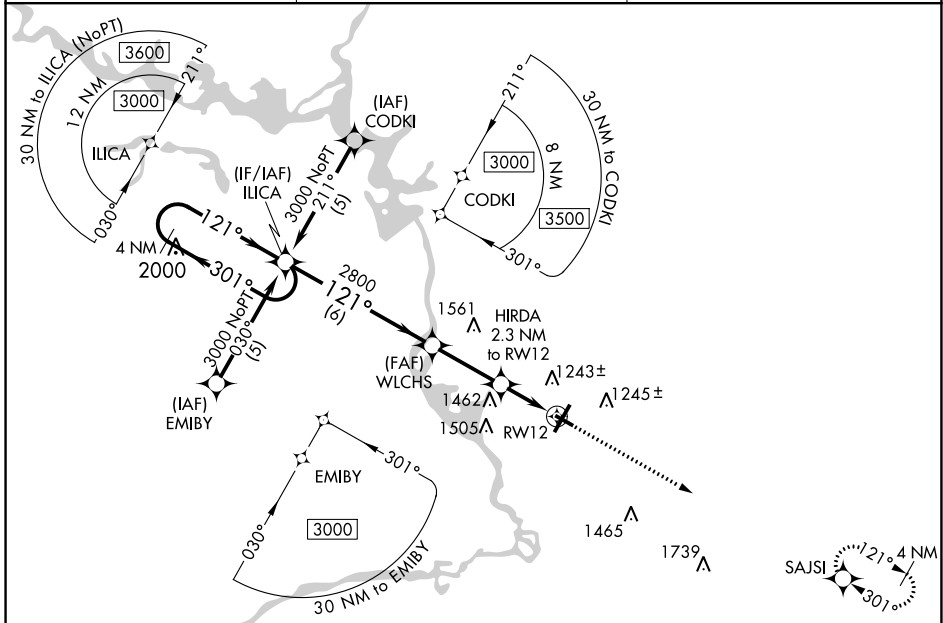
APP CRS	Rwy Idg	<b>3635</b>
<b>121°</b>	TDZE	<b>1108</b>
	Apt Elev	<b>1110</b>

# RNAV (GPS) RWY 12

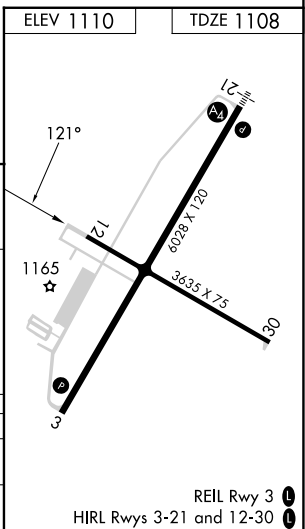
STEVENS POINT MUNI (STE)

RNP APCH - GPS.		MISSED APPROACH: Climb to 3000 direct SAJSI and hold.
<p><b>▼</b> Rwy 12 helicopter visibility reduction below 3/4 SM NA. When local altimeter not received, use Mosinee altimeter setting and increase all MDA 60 feet, increase LNAV Cat C and D visibility 1/8 SM. VDP NA when using Mosinee altimeter setting.</p>		

AWOS-3 <b>119.275</b>	MINNEAPOLIS CENTER <b>124.4 317.7</b>	UNICOM <b>122.7 (CTAF) 0</b>
--------------------------	--	---------------------------------



4 NM Holding Pattern		ILICA		WLCHS		HIRDA 2.3 NM to RW12		3000	SAJSI
3000		301° ← 121° →		121°		3.05° TCH 40		2800	1880
6 NM		2.8 NM		0.4		1.9			
CATEGORY	A	B	C	D					
LNAV MDA	1760-1	652 (700-1)	1760-1 7/8	652 (700-1 7/8)					
CIRCLING	1760-1	650 (700-1)	1860-2 1/4	1860-2 1/2					
			750 (800-2 1/4)	750 (800-2 1/2)					



EC-3, 13 JUN 2024 to 11 JUL 2024

EC-3, 13 JUN 2024 to 11 JUL 2024

REIL Rwy 3 0  
HIRL Rwy 3-21 and 12-30 0