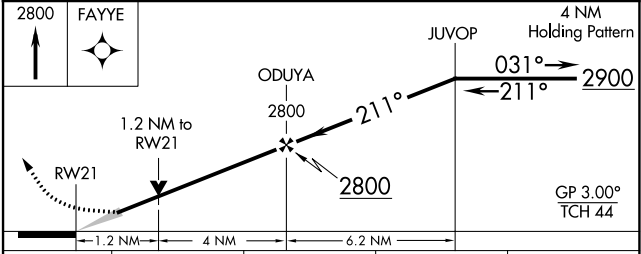
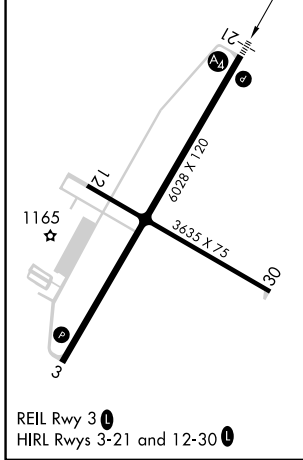
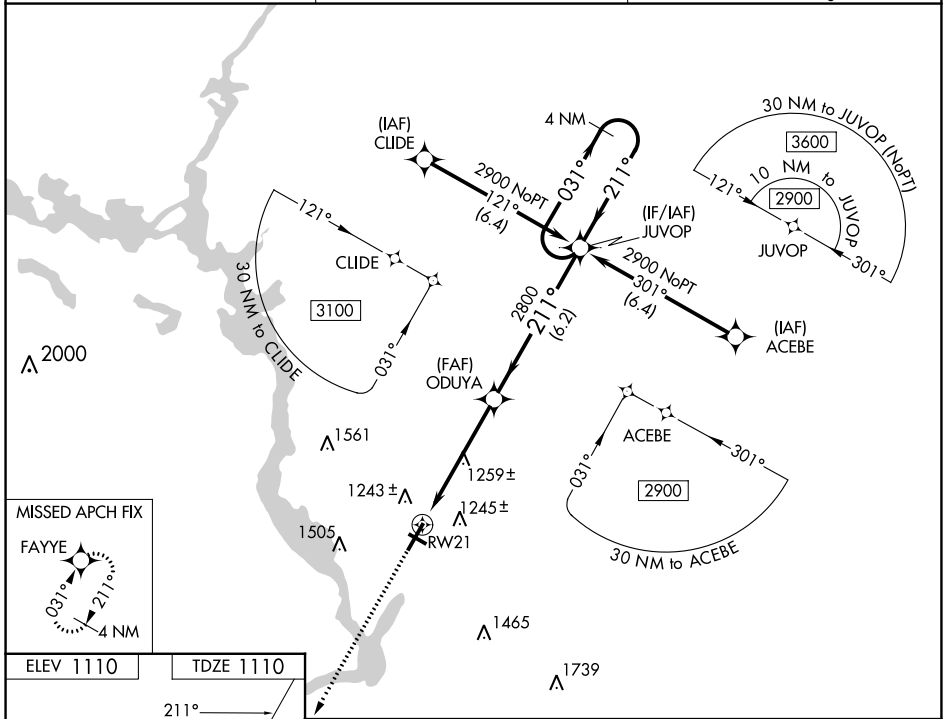


WAAS CH 86511 W21A	APP CRS 211°	Rwy Idg TDZE 1110 Apt Elev 1110	6028
--	------------------------	---	-------------

RNAV (GPS) RWY 21

STEVENS POINT MUNI (STP)

RNP APCH - GPS.	MALS	MISSED APPROACH: Climb to 2800 direct FAYYE and hold.
AWOS-3 119.275	MINNEAPOLIS CENTER 124.4 317.7	UNICOM 122.7 (CTAF)



CATEGORY	A	B	C	D
LPV DA		1360-3/4	250 (300-3/4)	
LNAV/VNAV DA		1457-3/4	347 (400-3/4)	
LNAV MDA	1520-3/4	410 (500-3/4)	1520-1	410 (500-1)
C CIRCLING	1580-1 470 (500-1)	1600-1 490 (500-1)	1860-2 1/4 750 (800-2 1/4)	1860-2 1/2 750 (800-2 1/2)

EC-3, 13 JUN 2024 to 11 JUL 2024

EC-3, 13 JUN 2024 to 11 JUL 2024