

APP CRS	Rwy Idg	3635
301°	TDZE	1108
	Apt Elev	1110

RNAV (GPS) RWY 30

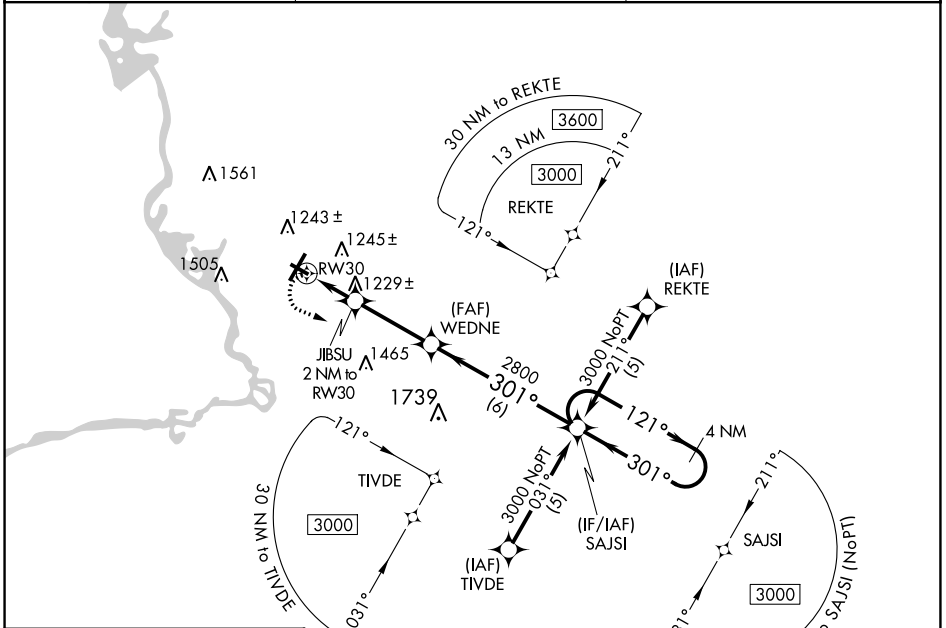
STEVENS POINT MUNI (STE)

RNP APCH - GPS.

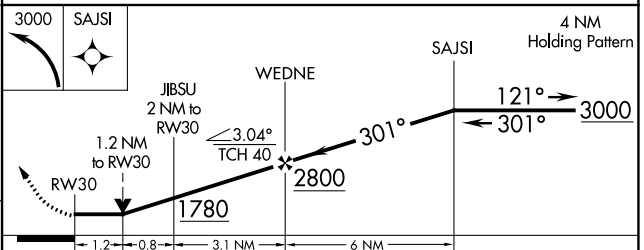
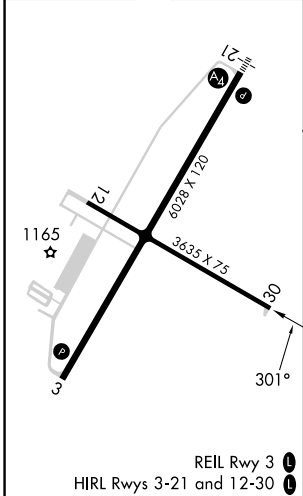
▼ Rwy 30 helicopter visibility reduction below 3/4 SM NA. When local altimeter setting not received, use Mosinee altimeter setting and increase all MDA 60 feet, increase LNAV Cat C and D visibility 1/4 SM. VDP NA when using Mosinee altimeter setting.

MISSED APPROACH:
Climbing left turn to 3000 direct SAJSI and hold.

AWOS-3 119.275	MINNEAPOLIS CENTER 124.4 317.7	UNICOM 122.7 (CTAF)
--------------------------	------------------------------------------	-------------------------------



ELEV 1110	TDZE 1108
-----------	-----------



CATEGORY	A	B	C	D
LNAV MDA	1520-1	412 (500-1)	1520-1 1/8	412 (500-1 1/8)
CIRCLING	1580-1 470 (500-1)	1600-1 490 (500-1)	1860-2 1/4 750 (800-2 1/4)	1860-2 1/2 750 (800-2 1/2)

EC-3, 13 JUN 2024 to 11 JUL 2024

EC-3, 13 JUN 2024 to 11 JUL 2024