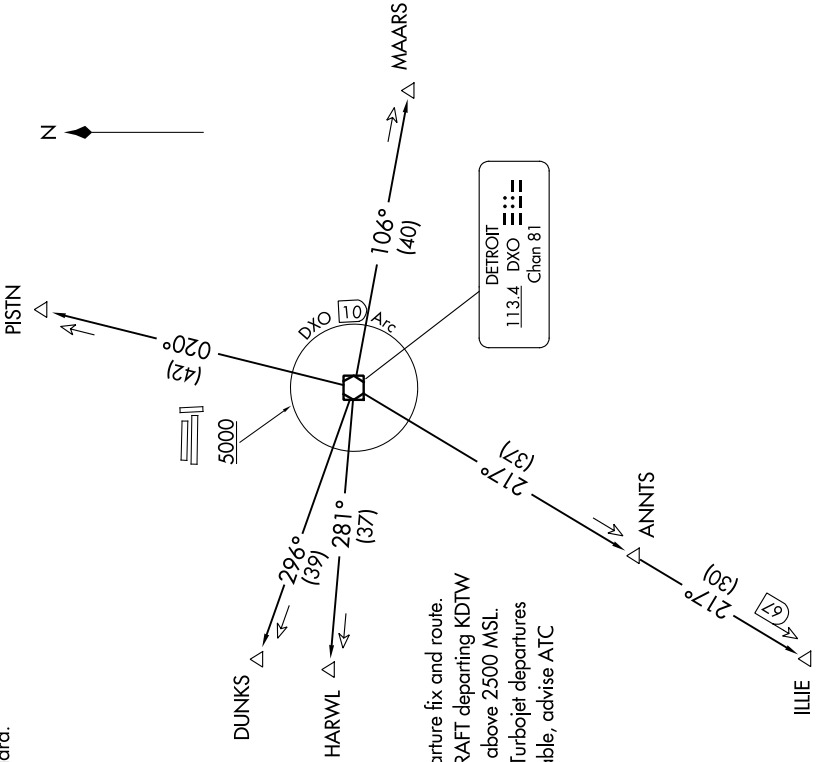


TOP ALTITUDE:
3000



EC-1, 13 JUN 2024 to 11 JUL 2024

TAKEOFF MINIMUMS

Rwy 18, 36: NA - Environmental.
Rwys 9L/R, 27L/R: Standard.

ATIS 125.025
CLNC DEL 118.25
GND CON 1121.9
PONTIAC TOWER *
120.5 (CTAF)
DETROIT DEP CON
132.35 284.0

NOTE: RADAR required.
NOTE: DME required.
NOTE: For use by non-RNAV equipped aircraft only.

SPECIAL INSTRUCTIONS:

When using this departure, file the appropriate depicted departure fix and route. Aircraft over HARWL must file FL220 and below. PROP AIRCRAFT departing KDTW Rwy 21L/R and 22L/R westbound, cross DXO 3.5 DME at or above 2500 MSL. Aircraft landing Cleveland (CLE) must file MAARS transition. Turbojet departures at/above 10000, maintain 280K until advised by ATC. If unable, advise ATC prior to departure.

(NARRATIVE ON FOLLOWING PAGE)

NOTE: Chart not to scale.

EC-1, 13 JUN 2024 to 11 JUL 2024