

APP CRS 050°	Rwy Idg 5101
	TDZE 575
	Apt Elev 578

RNAV (GPS) RWY 5

HARTNESS STATE (SPRINGFIELD) (V5F)

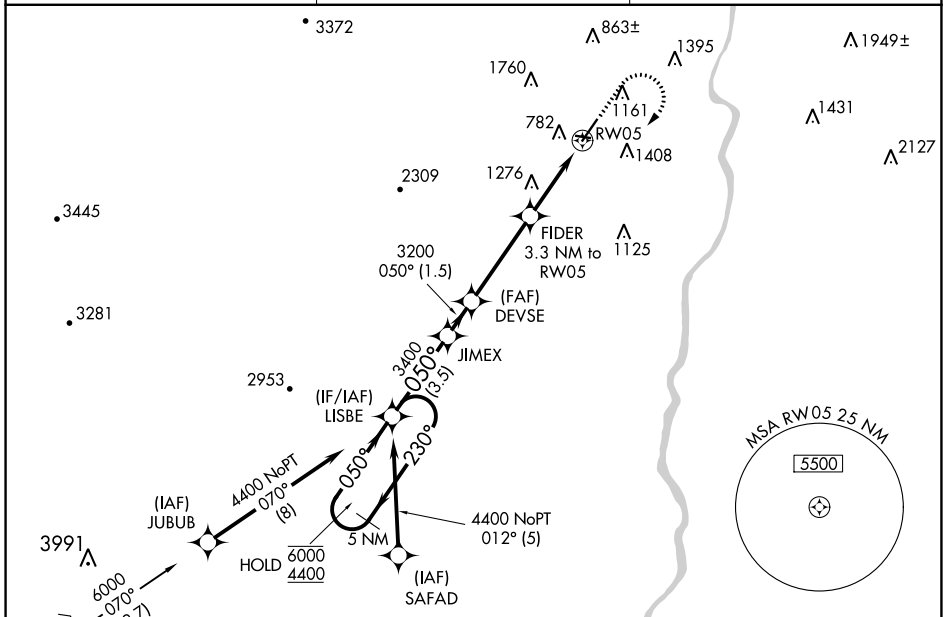
RNP APCH - GPS.

⚠ Circling Rwy 11, 23, 29 NA at night.
Rwy 5 helicopter visibility reduction below 3/4 SM NA.

❄ -20°C

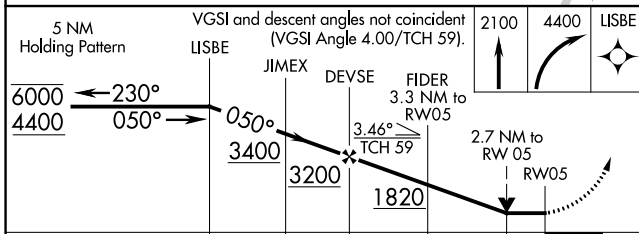
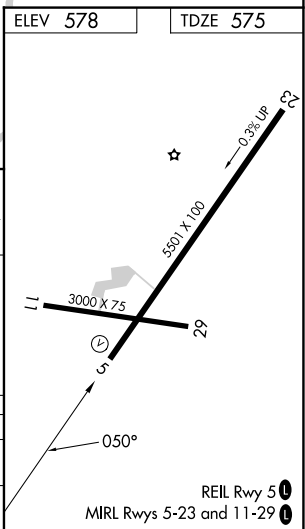
MISSED APPROACH: Climb to 2100 then climbing right turn to 4400 direct LISBE and hold.

ASOS 121.425	BOSTON CENTER 134.7 269.475	UNICOM 122.8 (CTAF) 0
------------------------	---------------------------------------	---------------------------------



NE-1, 13 JUN 2024 to 11 JUL 2024

NE-1, 13 JUN 2024 to 11 JUL 2024



CATEGORY	A	B	C	D
LNNAV MDA	1780-1¼ 1205 (1300-1¼)	1780-1½ 1205 (1300-1½)	1780-3	1205 (1300-3)
C CIRCLING	1780-1¼ 1202 (1300-1¼)	1780-1½ 1202 (1300-1½)	2600-3	2022 (2100-3)