


LOC/DME I-BMI	APP CRS	Rwy Idg	6525
110.95	291°	TDZE	871
Chan 46 (Y)		Apt Elev	871

# ILS or LOC RWY 29

CENTRAL IL RGNL/BLOOMINGTON-NORMAL (BMI)

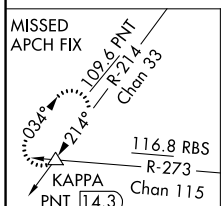
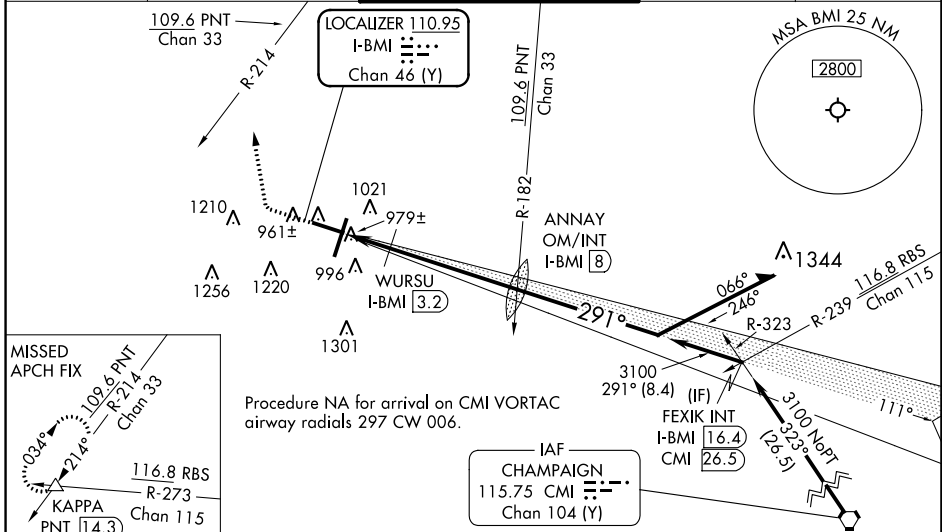
**⚠** For inop ALS, increase S-LOC 29 Cats C and D visibility to 1 3/8 SM and WURSU fix minimums Cats C and D visibility to RVR 5500.  
**\*\*RVR 1800 authorized with use of FD or AP or HUD to DA (NA when using General Downing-Peoria Intl altimeter setting).**

**MALSR**



**MISSED APPROACH:** Climb to 1500 then climbing right turn to 3000 on heading 350° and PNT VOR/DME R-214 to KAPPA INT/PNT 14.3 DME and hold.

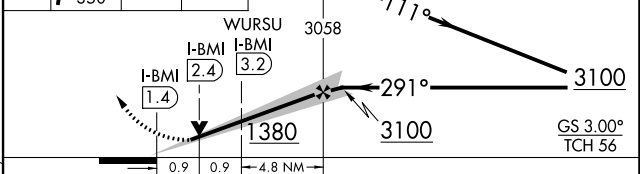
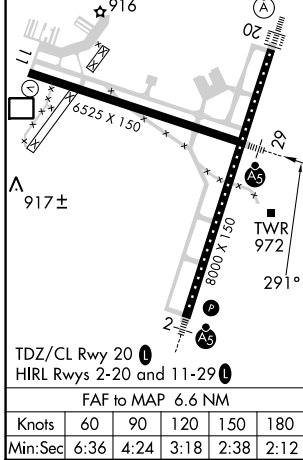
<b>ATIS</b> 135.35	<b>SAINT LOUIS APP CON</b> 128.725 256.9	<b>BLOOMINGTON TOWER *</b> 124.6 (CTAF) 0 269.575	<b>GND CON</b> 121.65	<b>UNICOM</b> 122.95
-----------------------	---	--	--------------------------	-------------------------



Procedure NA for arrival on CMI VORTAC airway radials 297 CW 006.

**IAF CHAMPAIGN**  
115.75 CMI Chan 104 (Y)

ELEV 871	<b>D</b> TDZE 871	1500	3000	hdg 350°	PNT R-214	KAPPA	ANNAY OM/INT I-BMI 8	Remain within 10 NM
----------	-------------------	------	------	----------	-----------	-------	----------------------	---------------------



CATEGORY	A	B	C	D
S-LS 29 **	1071/24 200 (200-1/2)			
S-LOC 29	1380/24	509 (600-1/2)	1380/55	509 (600-1)
<b>C</b> CIRCLING	1380-1	509 (600-1)	1620-2 1/4 749 (800-2 1/4)	1620-2 1/2 749 (800-2 1/2)
<b>WURSU FIX MINIMUMS</b>				
S-LOC 29	1240/24	369 (400-1/2)	1240/35	369 (400-5/8)
<b>C</b> CIRCLING	1340-1	469 (500-1)	1620-2 1/4 749 (800-2 1/4)	1620-2 1/2 749 (800-2 1/2)

# ILS or LOC RWY 29

EC-3, 13 JUN 2024 to 11 JUL 2024

EC-3, 13 JUN 2024 to 11 JUL 2024