

NW-1, 13 JUN 2024 to 11 JUL 2024

DEPARTURE ROUTE DESCRIPTION

TAKEOFF RUNWAY 13R: Climb heading 128° to 720, then climbing left turn direct GERDD, then on depicted route to CHISM, thence

TAKEOFF RUNWAY 31L: Climb heading 308° to 720, then climbing left turn direct HETAT, then on depicted route to CHISM, thence

. . . . on (Transition). Maintain assigned altitude. Expect filed altitude 10 minutes after departure.

DESCHUTES TRANSITION [CHISM4.DSD]

JOGEN TRANSITION [CHISM4.JOGEN]

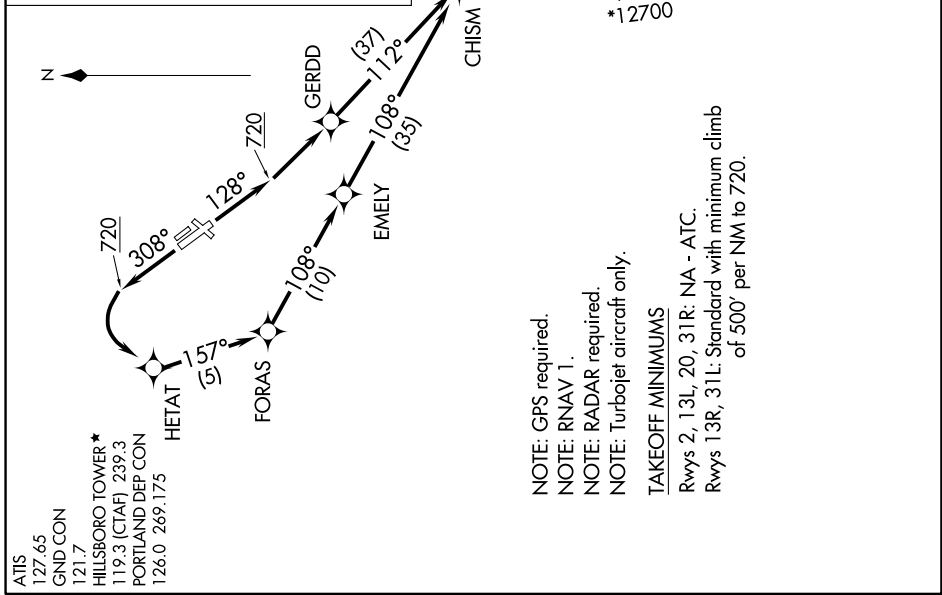
KIMBERLY TRANSITION [CHISM4.IMB]

PAWLI TRANSITION [CHISM4.PAWLI]

RIELY TRANSITION [CHISM4.RIELY]

SMIGE TRANSITION [CHISM4.SMIGE]

**TOP ALTITUDE:
ASSIGNED BY ATC**



ATIS 127.65
 GND CON 121.7
 HILLSBORO TOWER * 119.3 (CTAF) 239.3
 PORTLAND DEP CON 126.0 269.175

NOTE: Chart not to scale.

NW-1, 13 JUN 2024 to 11 JUL 2024