

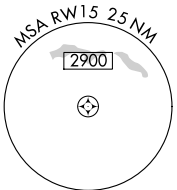
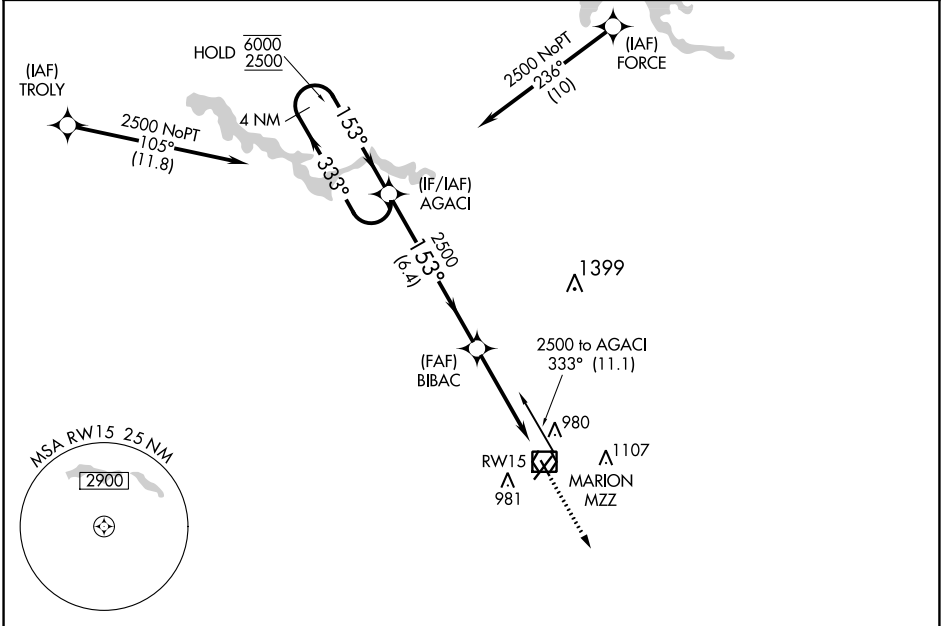
APP CRS 153°	Rwy Idg 3456
	TDZE 859
	Apt Elev 859

RNAV (GPS) RWY 15

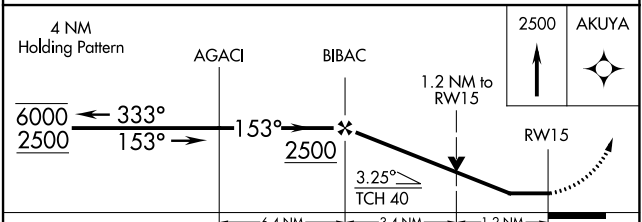
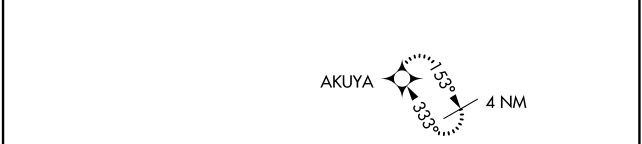
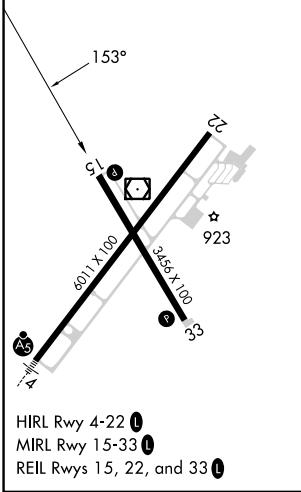
MARION MUNI - MCKINNEY FLD (MZZ)

RNP APCH - GPS.		MISSED APPROACH: Climb to 2500 direct AKUYA and hold.	
Rwy 15 helicopter visibility reduction below 3/4 SM NA. Circling Rwy 15 NA at night.			

AWOS-3 108.6	GRISSOM APP CON ★ 121.05 338.275	CLNC DEL 120.0	UNICOM 122.7 (CTAF) 0
------------------------	--	--------------------------	---------------------------------



ELEV 859	TDZE 859
----------	----------



CATEGORY	A	B	C	D
LNAV MDA	1300-1	441 (500-1)	1300-1 3/8	441 (500-1 3/8)
CIRCLING	1300-1 441 (500-1)	1320-1 461 (500-1)	1420-1 1/2 561 (600-1 1/2)	1500-2 641 (700-2)

EC-2, 13 JUN 2024 to 11 JUL 2024

EC-2, 13 JUN 2024 to 11 JUL 2024