

WAAS CH 93702 W06A	APP CRS 057°	Rwy Idg TDZE Apt Elev	7201 2351 2351
--	------------------------	-----------------------------	---

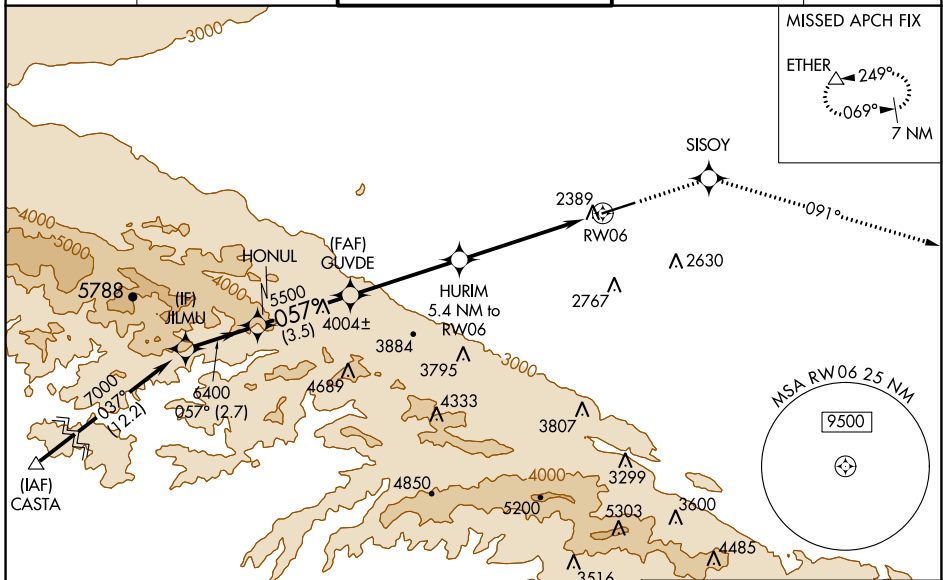
RNAV (GPS) RWY 6

GENERAL WM J FOX AIRFIELD (WJF)

▼ When VGSI inop, Straight-in/Circling Rwy 6 procedure NA at night.
▲ DME/DME RNP-0.3 NA. Visibility reduction by helicopters NA.
⚠ For uncompensated Baro-VNAV systems, LNAV/VNAV NA below -19°C (-2°F) or above 45°C (113°F). When local altimeter setting not received, use Palmdale altimeter setting: increase LPV DA to 2661 feet, LNAV/VNAV DA to 2709 feet and all MDAs 60 feet, and increase Circling Cats C/D visibility ¼ SM.
⚠ Baro-VNAV NA when using Palmdale altimeter setting.

MISSED APPROACH: Climb to 6000 direct SISOY and via 091° track to ETHER and hold.

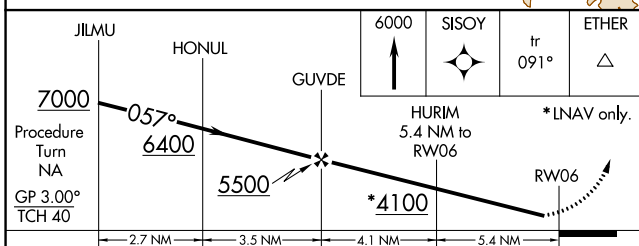
ATIS 126.3	JOSHUA APP CON 126.1 290.3	FOX TOWER* 118.525 (CTAF) 256.9	GND CON 121.7 256.9	UNICOM 122.95
----------------------	--------------------------------------	---	-------------------------------	-------------------------



SW-3, 13 JUN 2024 to 11 JUL 2024

SW-3, 13 JUN 2024 to 11 JUL 2024

ELEV 2351	TDZE 2351
-----------	-----------



CATEGORY	A	B	C	D
LPV DA	2601-1 250 (300-1)			
LNAV/VNAV DA	2649-1 298 (300-1)			
LNAV MDA	2940-1 589 (600-1)	2940-1½ 589 (600-1½)	2940-1¾ 589 (600-1¾)	
CIRCLING	2940-1 589 (600-1)	3120-2¼ 769 (800-2¼)	3120-2½ 769 (800-2½)	

