

HI-TACAN Z RWY 14R

TACAN NLC Chan 80	APCH CRS 142°	Rwy ldg 13,501 TDZE 228 Arprt Elev 228
-----------------------------	-------------------------	---

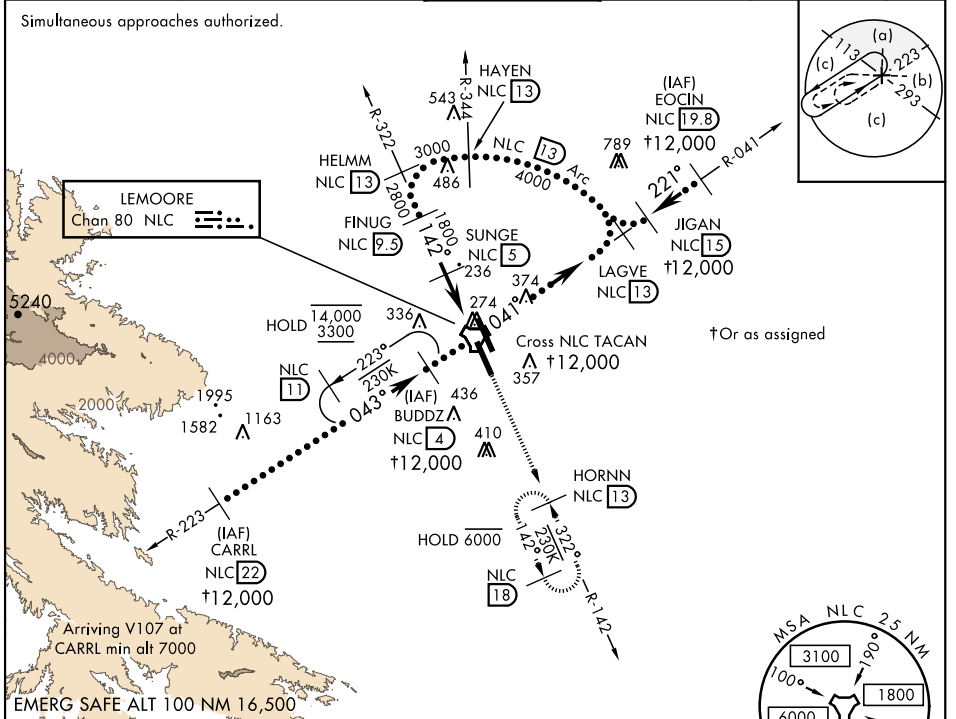
AL-5067 [USN]

LEMOORE NAS (REEVES FIELD) (KNLC)

MISSED APPROACH: Climb to 3000 via R-142 to HORNN and hold.

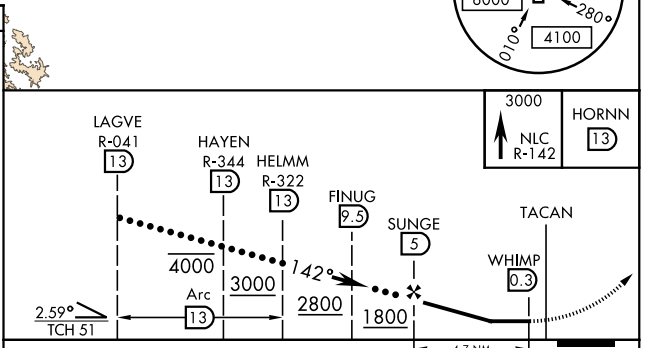
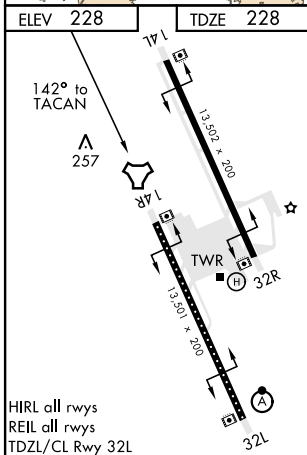
ATIS★ 121.575 327.15	APP CON 124.1 269.025 (N) 118.15 269.025 (S)	TOWER★ 128.3 360.2	GND CON 121.65 305.2	CLNC DEL 124.1 371.9	ASR/ PAR
--------------------------------	--	------------------------------	--------------------------------	--------------------------------	-------------

Simultaneous approaches authorized.



SW-2, 13 JUN 2024 to 11 JUL 2024

SW-2, 13 JUN 2024 to 11 JUL 2024



CATEGORY	C	D	E
S-14R	560-1	332	(400-1)
C CIRCLING	700-1½ 472 (500-1½)	780-2	552 (600-2)

HI-TACAN Z RWY 14R