

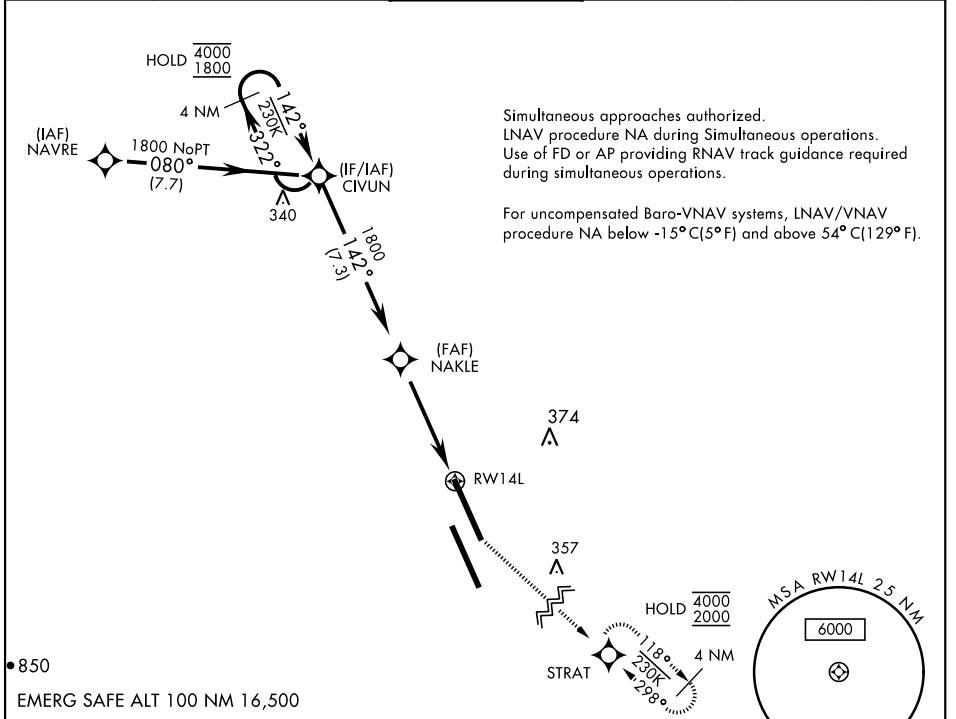
# RNAV (GPS) RWY 14L

WAAS Chan <b>70209</b> <b>W14A</b>	APCH CRS <b>142°</b>	Rwy Idg <b>13,502</b> TDZE <b>219</b> Arprt Elev <b>228</b>
--	-------------------------	---

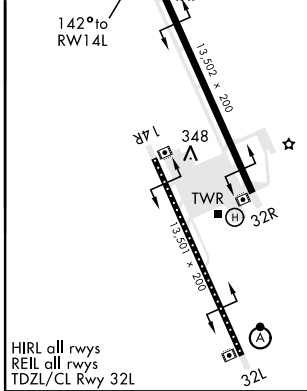
AL-5067 [USN]

LEMOORE NAS (REEVES FIELD) (KNLC)

DME/DME RNP-0.3 NA		MISSED APPROACH: Climb to 1200, then climb left turn to 2000 direct STRAT and hold.			
ATIS ★ <b>121.575 327.15</b>	APP CON <b>124.1 269.025 (N)</b> <b>118.15 269.025 (S)</b>	TOWER ★ <b>128.3 340.2</b>	GND CON <b>121.65 305.2</b>	CLNC DEL <b>124.1 371.9</b>	ASR/PAR



ELEV 228	TDZE 219
----------	----------



4 NM Holding Pattern	CIVUN		NAKLE		1200	2000	STRAT
	4000 1800	322°	142°	1800	0.8 NM to RWY 14L		
GP 3.00° TCH 54			4.8 NM				
CATEGORY	A	B	C	D			
LPV DA	419-3/4	200	(200-3/4)				
LNAV/VNAV DA	469-3/4	250	(300-3/4)				
LNAV MDA	520-1	301	(300-1)				
<b>C</b> CIRCLING	680-1	452 (500-1)	700-1 1/2 472 (500-1 1/2)	780-2 552 (600-2)			

# RNAV (GPS) RWY 14L

SW-2, 13 JUN 2024 to 11 JUL 2024

SW-2, 13 JUN 2024 to 11 JUL 2024