

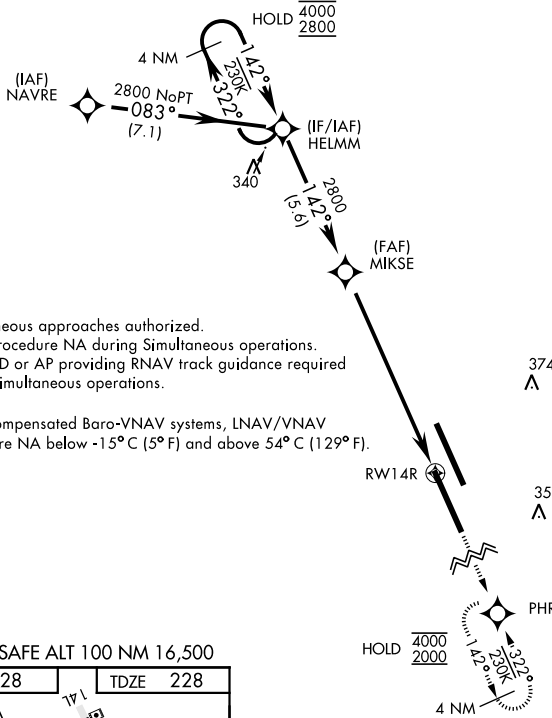
RNAV (GPS) RWY 14R

WAAS Chan 80286 W14B	APCH CRS 142°	Rwy Idg 13,501 TDZE 228 Arpt Elev 228
--	-------------------------	--

AL-5067 [USN]

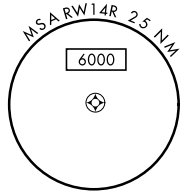
LEMOORE NAS (REEVES FIELD) (KNLC)

▽ DME/DME RNP-0.3 NA		MISSED APPROACH: Climb to 1200, then climbing right turn to 2000 direct PHROG and hold.			
ATIS ★ 121.575 327.15	APP CON 124.1 269.025 (N) 118.15 269.025 (S)	TOWER ★ 128.3 360.2	GND CON 121.65 305.2	CLNC DEL 124.1 371.9	ASR/PAR

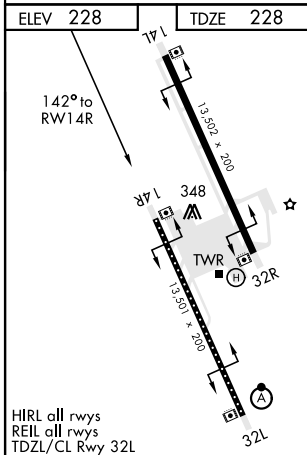


Simultaneous approaches authorized.
 LNAV procedure NA during Simultaneous operations.
 Use of FD or AP providing RNAV track guidance required during simultaneous operations.

For uncompensated Baro-VNAV systems, LNAV/VNAV procedure NA below -15°C (5°F) and above 54°C (129°F).



EMERG SAFE ALT 100 NM 16,500



HIRL all rws
 REIL all rws
 TDZL/CL Rwy 32L

4 NM Holding Pattern HELMM GP 3.00° TCH 51	4000 2800 142°		322° 142°		142°		2800 7.9 NM		1200 2000 PHROG	
	1.3 NM to RWY14R		RWY14R		374 357		PHROG		MSA RWY 14R 2.5 NM 6000	
CATEGORY	A		B		C		D			
LPV DA			428-3/4 200 (200-3/4)							
LNAV/VNAV DA			483-3/4 255 (300-3/4)							
LNAV MDA	680-1 452 (500-1)				680-1 452 (500-1 1/2)					
CIRCLING	680-1 452 (500-1)				700-1 1/2 472 (500-1 1/2)		780-2 552 (600-2)			

RNAV (GPS) RWY 14R

SW-2, 13 JUN 2024 to 11 JUL 2024

SW-2, 13 JUN 2024 to 11 JUL 2024