

LEMOORE, CALIFORNIA

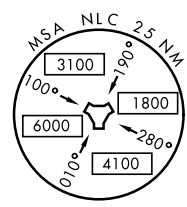
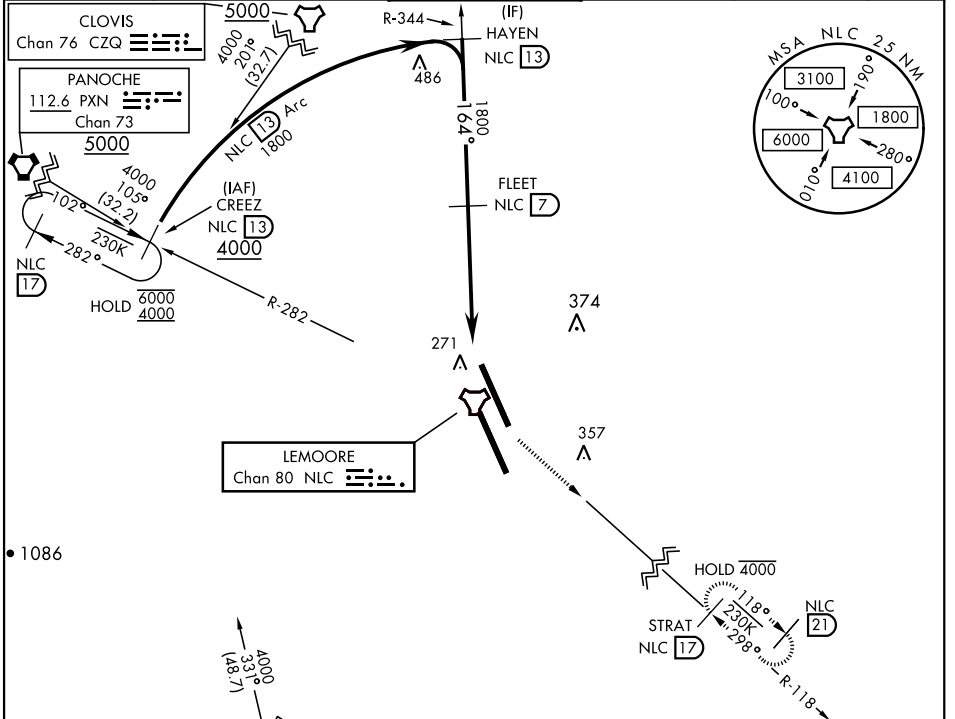
TACAN Y RWY 14L

TACAN NLC Chan 80	APCH CRS 164°	Rwy Ldg TDZE 13,502 219 Arprt Elev 228
----------------------	------------------	--

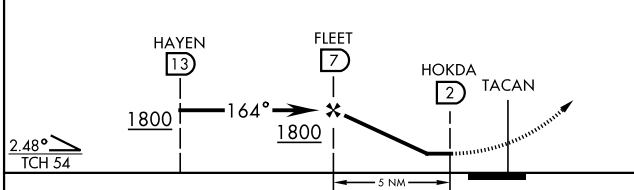
AL-5067 [USN]

LEMOORE NAS (REEVES FIELD) (KNLC)

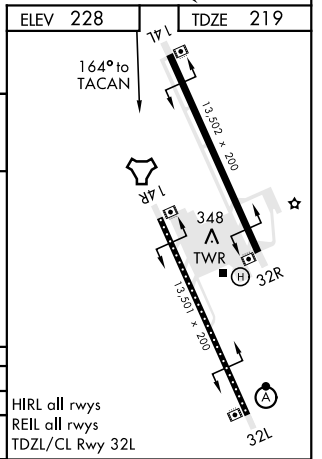
<p>MISSED APPROACH: Climb to 700 then climbing left turn to 2000 via heading 142°, intercept NLC TACAN R-118 to STRAT and hold.</p>					
ATIS ★ 121.575 327.15	APP CON 124.1 269.025 (N) 118.15 269.025 (S)	TOWER ★ 128.3 340.2	GND CON 121.65 305.2	CLNC DEL 124.1 371.9	ASR/PAR



ELEV 228	TDZE 219
----------	----------



CATEGORY	A	B	C	D
S-14L	560-1	341	(400-1)	
☉ CIRCLING	680-1 452 (500-1)		700-1½ 472 (500-1½)	780-2 552 (600-2)



LEMOORE, CALIFORNIA
Amdt 6 19MAY22

36°20'N-119°57'W

LEMOORE NAS (REEVES FIELD) (KNLC)

TACAN Y RWY 14L

SW-2, 13 JUN 2024 to 11 JUL 2024

SW-2, 13 JUN 2024 to 11 JUL 2024