

# TACAN Y RWY 32L

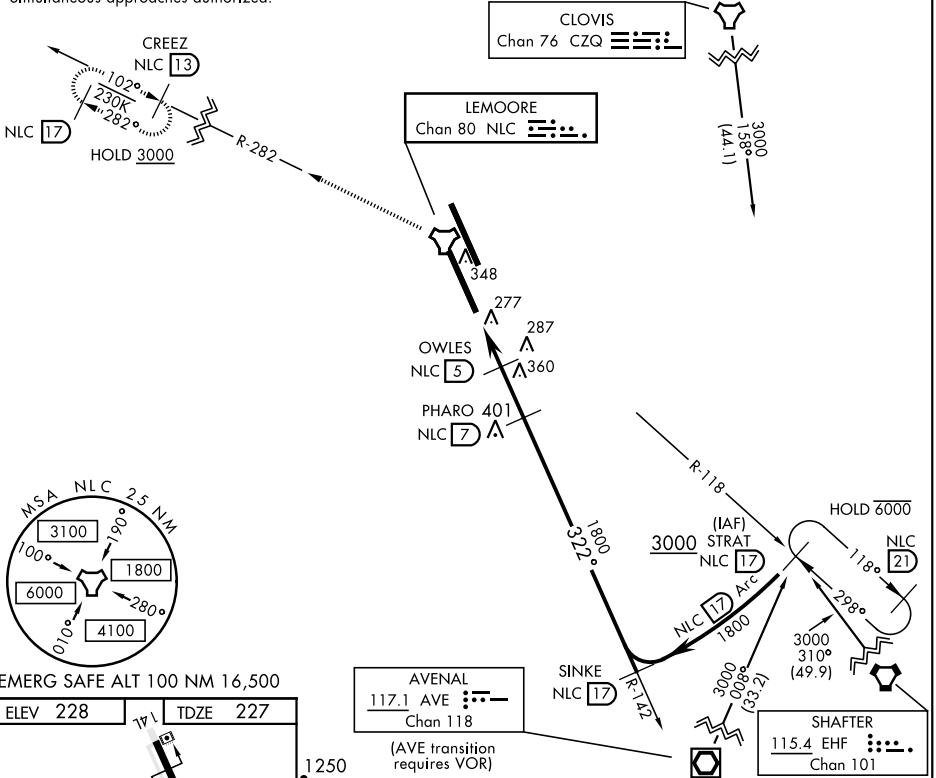
TACAN Chan <b>80</b>	APCH CRS <b>322°</b>	Rwy ldg TDZE Arprt Elev <b>13,501</b> <b>227</b> <b>228</b>
-------------------------	-------------------------	--

AL-5067 [USN]

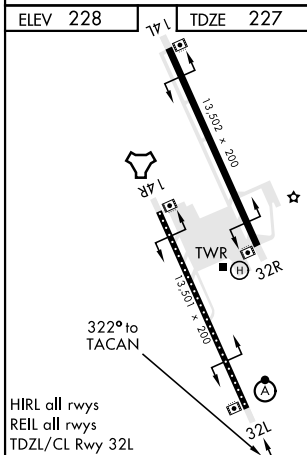
LEMOORE NAS (REEVES FIELD) (KNLC)

*When ALS inop, increase vis to 1 mile.		ALSF-2 	MISSED APPROACH: Climb to 3000 via R-142 to NLC TACAN, then via R-282 to CREEZ and hold.		
ATIS * <b>121.575 327.15</b>	APP CON <b>124.1 269.025 (N)</b> <b>118.15 269.025 (S)</b>	TOWER * <b>128.3 340.2</b>	GND CON <b>121.65 305.2</b>	CLNC DEL <b>124.1 371.9</b>	ASR/PAR

Simultaneous approaches authorized.



EMERG SAFE ALT 100 NM 16,500



ELEV 228	AL	TDZE 227		
1250	3000	NLC R-142	NLC R-282	
TACAN	PHARO 7	SINKE R-142 17	STRAT R-118 17	
SUZIQ 3.4	OWLES 5	1800	3000	
1.6 NM	2 NM	1800	3.37° TCH 50	
CATEGORY	A	B	C	D
S-32L *	580-1/2	353	(400-1/2)	
<input checked="" type="checkbox"/> CIRCLING	680-1 452 (500-1)	700-1 1/2 472 (500-1 1/2)	780-2 552 (600-2)	

# TACAN Y RWY 32L

SW-2, 13 JUN 2024 to 11 JUL 2024

SW-2, 13 JUN 2024 to 11 JUL 2024