

WAAS CH <b>53401</b> <b>W04A</b>	APP CRS <b>043°</b>	Rwy Idg TDZE Apt Elev	<b>4500</b> <b>2132</b> <b>2135</b>
--	------------------------	-----------------------------	---

# RNAV (GPS) RWY 4

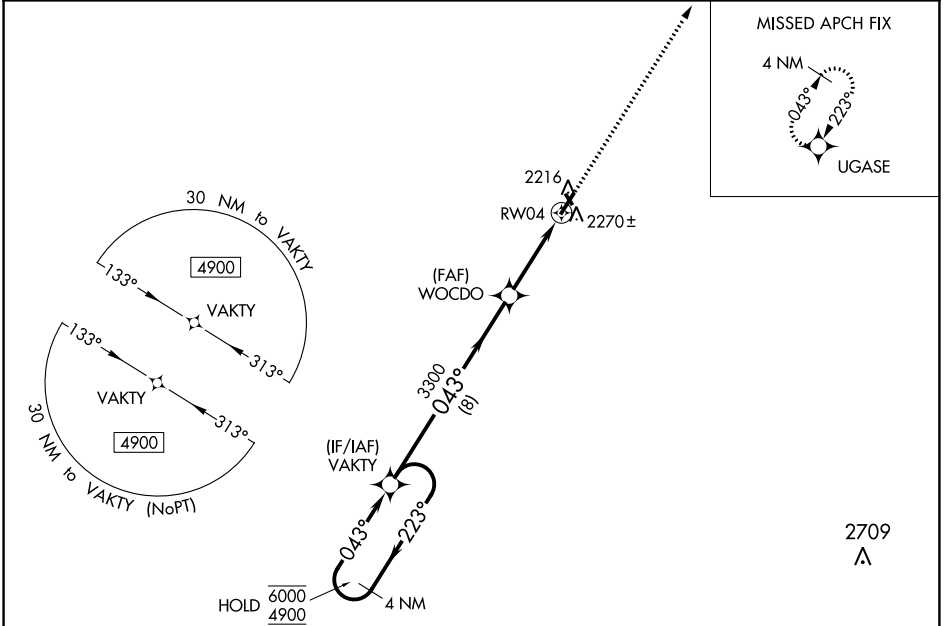
CATTARAUGUS COUNTY-OLEAN (OLE)

RNP APCH-GPS.

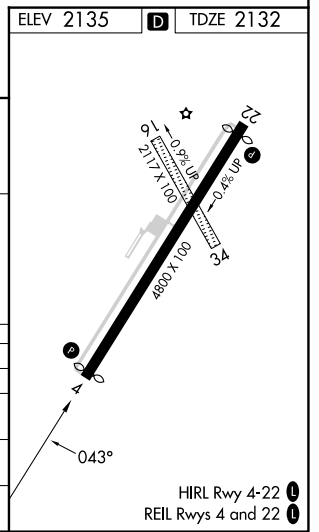
⚠ Circling NA to Rwys 16 and 34. Rwy 4 helicopter visibility reduction below  $\frac{3}{4}$  SM NA. When VGSI inop, Circling Rwy 22 NA at night. For uncompensated Baro-VNAV systems, LNAV/VNAV NA below -19°C or above 54°C.

MISSED APPROACH: Climb to 4500 direct UGASE and hold.

AWOS-3 <b>118.375</b>	CLEVELAND CENTER <b>124.325 353.85</b>	UNICOM <b>122.8 (CTAF)</b> <b>U</b>
--------------------------	---	--



4 NM Holding Pattern		VAKTY	4500	UGASE
6000 ← 223°		← 043° →	3300	1.2 NM to RW04
4900		043°	WOCD0	RW04
GP 3.00° TCH 40		3300	8 NM	2.3 NM
				1.2 NM
CATEGORY	A	B	C	D
LPV DA		2382- $\frac{3}{4}$	250 (300- $\frac{3}{4}$ )	
LNAV/VNAV DA		2549-1 $\frac{1}{8}$	417 (500-1 $\frac{1}{8}$ )	
LNAV MDA	2560-1	428 (500-1)	2560-1 $\frac{1}{4}$	428 (500-1 $\frac{1}{4}$ )
<b>C</b> CIRCLING	2620-1	485 (500-1)	2680-1 $\frac{1}{2}$ 545 (600-1 $\frac{1}{2}$ )	2720-2 585 (600-2)



NE-2, 13 JUN 2024 to 11 JUL 2024

NE-2, 13 JUN 2024 to 11 JUL 2024