

LOC I-SKC 109.5	APP CRS 103°	Rwy Idg 5849
		TDZE 901
		Apt Elev 911

ILS or LOC RWY 10

WAUKESHA COUNTY (U/E/S)

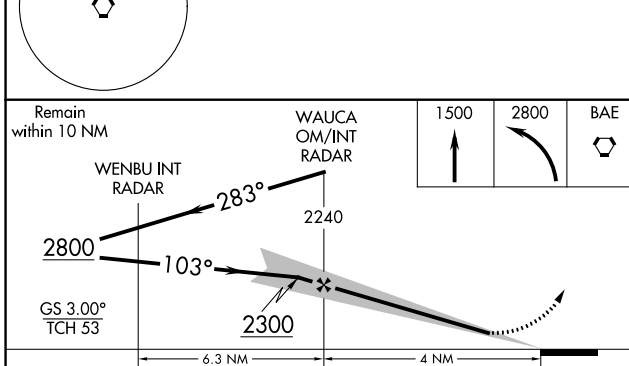
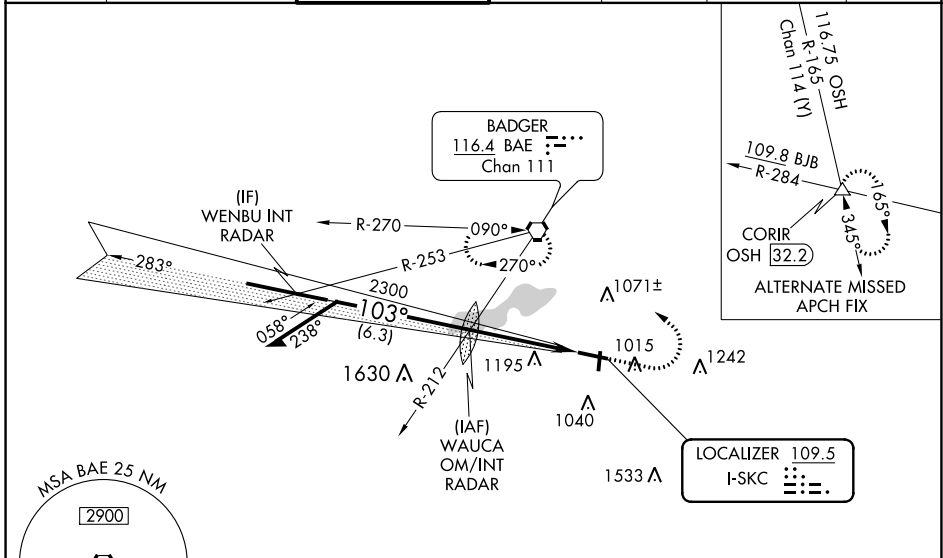
RADAR required for procedure entry.

⚠ For inoperative MALSRS, increase S-LOC 10 Cat C/D visibility to 1 1/2 mile. For inop MALSRS when using Lawrence J Timmerman altimeter setting, increase S-LOC 10 Cat C/D visibility to 1 1/2 mile. When local altimeter setting not received, use Lawrence J Timmerman altimeter setting: increase DA to 1147 feet; increase all MDAs 60 feet and increase S-LOC 10 Cat C and D and Circling Cat C and D visibility 1/4 SM.

MALSRS

MISSED APPROACH:
Climb to 1500 then climbing left turn to 2800 direct BAE VORTAC and hold.

ATIS 118.875	MILWAUKEE APP CON 125.35 307.0	WAUKESHA TOWER * 123.7 (CTAF)	GND CON 121.6	CLNC DEL 121.6	CLNC DEL 128.7 <small>(When twr closed)</small>	UNICOM 122.95
------------------------	--	---	-------------------------	--------------------------	--	-------------------------



ELEV 911	TDZE 901
----------	----------

TWR 960

HIRL Rwy 10-28
MIRL Rwy 18-36
REIL Rwy 18, 28 and 36
FAF to MAP 4 NM
Knots: 60 90 120 150 180
Min:Seq: 4:00 2:40 2:00 1:36 1:20

CATEGORY	A	B	C	D
S-ILS-10	1101-1/2		200 (200-1/2)	
S-LOC-10	1400-1/2	499 (500-1/2)	1400-1	499 (500-1)
CIRCLING	1460-1 549 (600-1)	1500-1 589 (600-1)	1540-1 3/4 629 (700-1 3/4)	1640-2 1/4 729 (800-2 1/4)

EC-3, 13 JUN 2024 to 11 JUL 2024

EC-3, 13 JUN 2024 to 11 JUL 2024