

APP CRS	Rwy Idg	<b>5849</b>
<b>270°</b>	TDZE	<b>906</b>
	Apt Elev	<b>911</b>

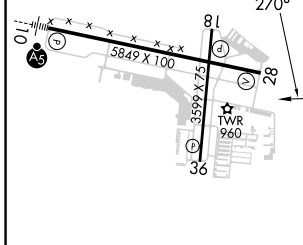
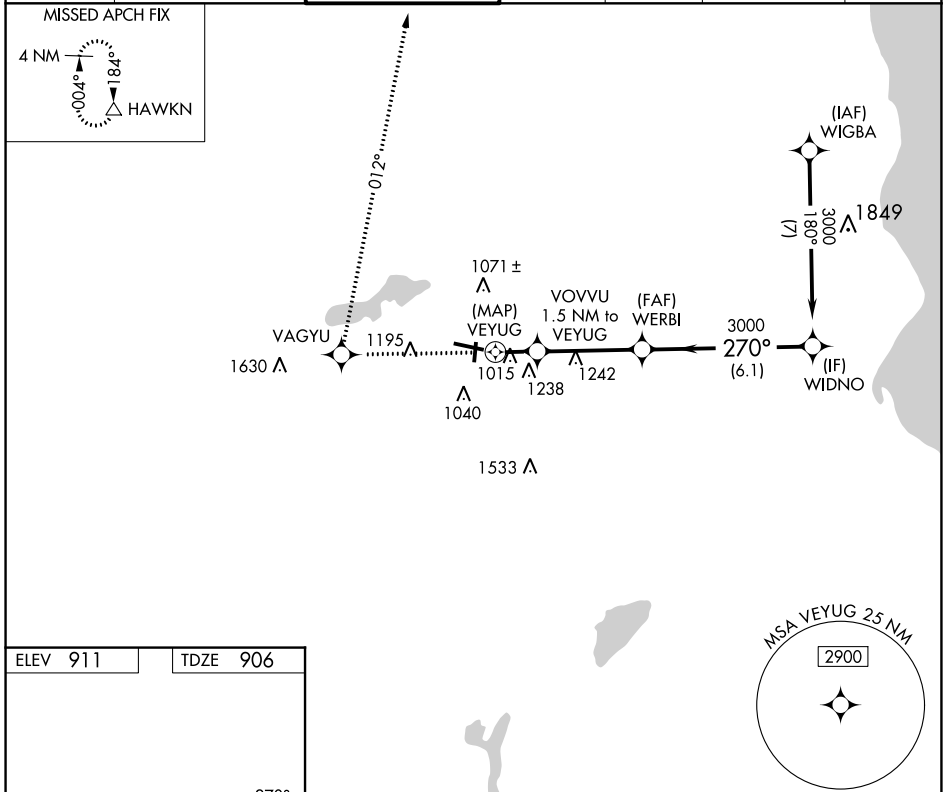
# RNAV (GPS) RWY 28

WAUKESHA COUNTY (U/S)

**▽** DME/DME RNP-0.3 NA. Visibility reduction by helicopters NA. When local altimeter setting not received, use Lawrence J Timmerman altimeter setting and increase all MDA 60 feet, increase Circling Cat C and D visibility ¼ mile.

**△** MISSED APPROACH: Climb to 3000 direct VAGYU and right turn via 012° track to HAWKN and hold.

ATIS <b>118.875</b>	MILWAUKEE APP CON <b>125.35 307.0</b>	WAUKESHA TOWER ★ <b>123.7 (CTAF) 0</b>	GND CON <b>121.6</b>	CLNC DEL <b>121.6</b>	CLNC DEL <b>128.7</b> (When twr closed)	UNICOM <b>122.95</b>
------------------------	--	---	-------------------------	--------------------------	---	-------------------------



ELEV 911	TDZE 906	3000	VAGYU	HAWKN	WERBI	WIDNO
		↑	✧	tr 012°	✧	✧
		VGS1 and descent angles not coincident (VGS1 Angle 3.75/TCH 37).				
		VOVVU 1.5 NM to VEYUG VEYUG → WERBI → WIDNO 1640 → 3000 → 3000 TCH 37 3.38°				Procedure Turn NA
		← 1.5 NM →    ← 3.8 NM →    ← 6.1 NM →				
CATEGORY	A	B	C	D		
LNAV MDA	1420-1	514 (600-1)	1420-1½ 514 (600-1½)	1420-1¾ 514 (600-1¾)		
CIRCLING	1460-1 549 (600-1)	1500-1 589 (600-1)	1540-1¾ 629 (700-1¾)	1640-2¼ 729 (800-2¼)		

HIRL Rwy 10-28 **1**  
 MIRL Rwy 18-36 **1**  
 REIL Rwy 18, 28 and 36 **1**

EC-3, 13 JUN 2024 to 11 JUL 2024

EC-3, 13 JUN 2024 to 11 JUL 2024