

MERIDIAN, MISSISSIPPI

# HI-ILS X or LOC/DME X RWY 19L

LOC/DME I-NMM <b>109.7</b> Chan <b>34</b>	APCH CRS <b>191°</b>	Rwy ldg TDZE Arpt Elev <b>8000</b> <b>316</b> <b>316</b>
---	-------------------------	---

AL-5079 [USN]

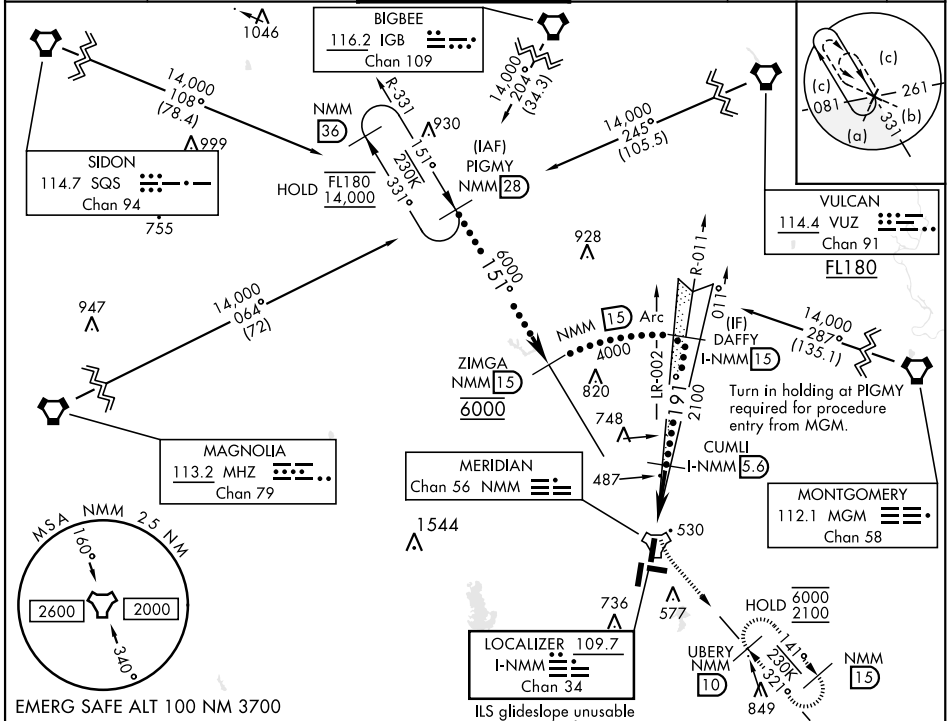
MERIDIAN NAS (MC CAIN FIELD) (KNMM)

**▽** \*When ALS inop, increase vis to ¾ mile.  
\*\*When ALS inop, increase vis to 1¼ miles.

MALS R (A5)

MISSED APPROACH: Climb to 800 then climbing left turn to 2100 intercept NMM R-141 to UBERY and hold.

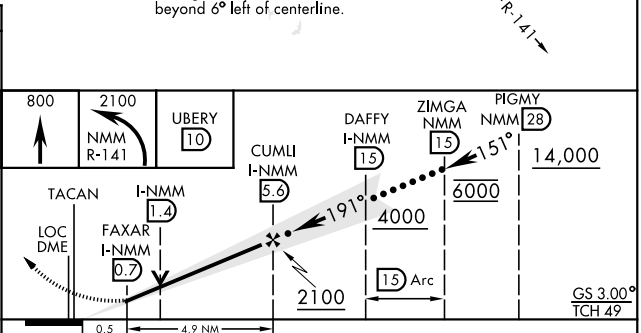
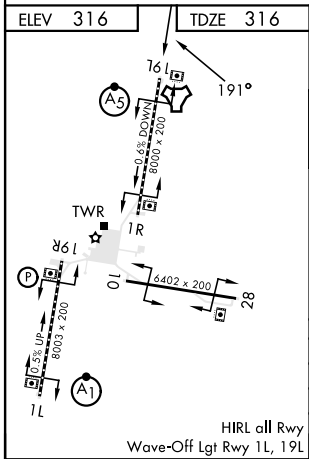
ATIS ★ <b>290.525</b>	APP CON <b>120.95 276.4</b>	NAVY MC CAIN TOWER ★ <b>126.2 340.2</b>	GND CON <b>336.4</b>	CLNC DEL <b>301.0</b>	ASR/ PAR
--------------------------	--------------------------------	--	-------------------------	--------------------------	-------------



SC-4, 13 JUN 2024 to 11 JUL 2024

SC-4, 13 JUN 2024 to 11 JUL 2024

EMERG SAFE ALT 100 NM 3700



CATEGORY	C	D	E
S-ILS 19L *	516-½	200	(200-½)
S-LOC 19L**	740-¾	424	(500-¾)
CIRCLING	840-1½ 524 (600-1½)	880-2 564 (600-2)	1080-2¾ 764 (800-2¾)

MERIDIAN, MISSISSIPPI

32° 33' N - 88° 33' W

MERIDIAN NAS (MC CAIN FIELD) (KNMM)

Orig 01DEC22

# HI-ILS X or LOC/DME X RWY 19L