

MERIDIAN, MISSISSIPPI

ILS W or LOC/DME W RWY 19L

LOC/DME I-NMM 109.7 Chan 34	APCH CRS 191°	Rwy Ldg TDZE Arpt Elev 8000 316 316
-------------------------------------------------	-------------------------	-------------------------------------------------------------------------

AL-5079 [USN]

MERIDIAN NAS (MC CAIN FIELD) (KNMM)

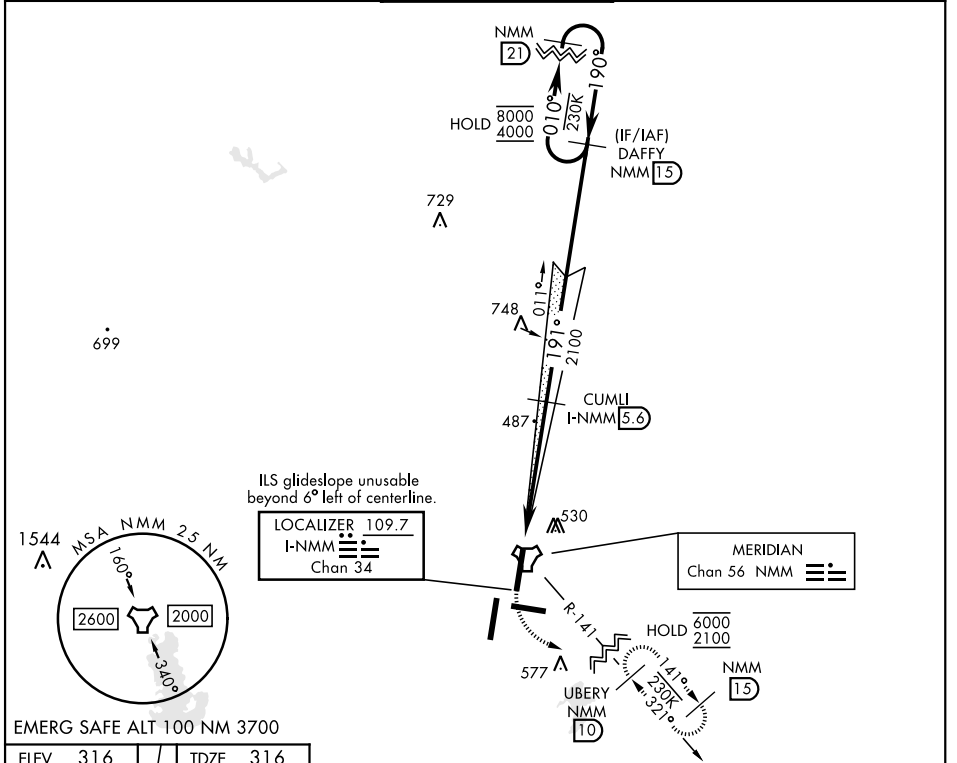
RADAR required

▼ * When ALS inop, increase vis to ¾ mile.
** When ALS inop, increase CAT AB vis to 1 mile, CAT CD vis to 1½ miles.

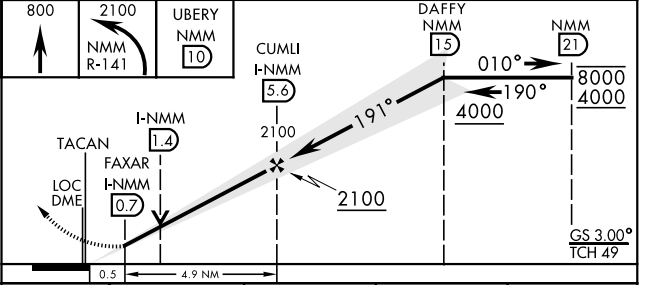
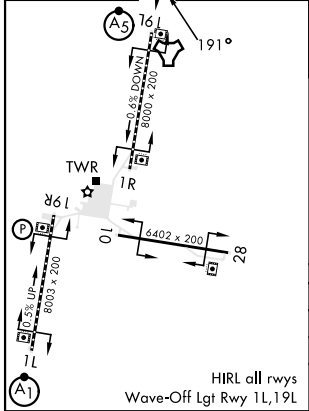


MISSED APPROACH: Climb to 800, then climbing left turn to 2100 to intercept NMM R-141 to UBERY and hold.

ATIS ★ 290.525	APP CON 120.95 276.4	NAVY MC CAIN TOWER ★ 126.2 340.2	GND CON 336.4	CINC DEL 301.0	ASR/PAR
--------------------------	--------------------------------	--------------------------------------------	-------------------------	--------------------------	---------



EMERG SAFE ALT 100 NM 3700



CATEGORY	A	B	C	D
S-ILS 19L *	516-½	200	(200-½)	
S-LOC 19L **	740-½ 424	(500-½)	740-¾ 424	(500-¾)
CIRCLING	820-1 504 (600-1)	840-1 524 (600-1)	840-1½ 524 (600-1½)	880-2 564 (600-2)

MERIDIAN, MISSISSIPPI

32° 33' N-88° 33' W

MERIDIAN NAS (MC CAIN FIELD) (KNMM)

Orig 01DEC22

ILS W or LOC/DME W RWY 19L

SC-4, 13 JUN 2024 to 11 JUL 2024

SC-4, 13 JUN 2024 to 11 JUL 2024