

MERIDIAN, MISSISSIPPI

# RNAV (GPS) RWY 1L

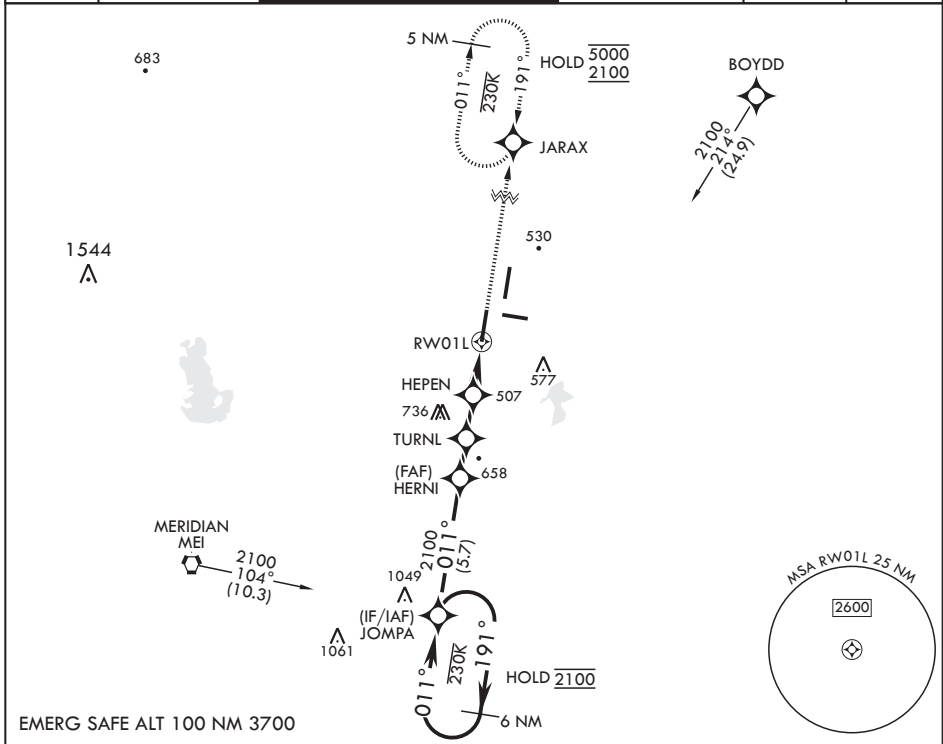
APCH CRS 011°	Rwy Idg TDZE Arprt Elev	8003 254 316
------------------	-------------------------------	--------------------

AL-5079 (USN)

MERIDIAN NAS (MC CAIN FLD) (KNMM)

RNP APCH.	ALSF-1	MISSED APPROACH: Climb to 2100 direct JARAX and hold.
-----------	--------	---

ATIS* 290.525	APP CON 120.5 269.325 S 379.275 N 120.95 276.4 W 121.275 348.7 E	MC CAIN TOWER* 126.2 340.2 RWY 01L, 19L AND 28 126.2 360.2 RWY 01R, 19R AND 10	MC CAIN GND CON 336.4	CLNC DEL 301.0	ASR/PAR
------------------	--	--	--------------------------	-------------------	---------



EMERG SAFE ALT 100 NM 3700

6 NM holding pattern JOMPA → HERNI → TURNL → HEPEN → RW01L 2100 ← 191° → 011° → 2100 1500 940 1.4 NM to RW01L 1.7 NM   1.8 NM   2.2 NM	JARAX ELEV 316 TDZE 254	TWR 8000 x 200 BCN 861 8003 x 200 6402 x 200 0.5% UP 0.6% UP 0.5% UP

MERIDIAN, MISSISSIPPI

32°33'N - 88°33'W

MERIDIAN NAS (MC CAIN FLD) (KNMM)

Amdt 4 08SEP22

# RNAV (GPS) RWY 1L

SC-4, 13 JUN 2024 to 11 JUL 2024

SC-4, 13 JUN 2024 to 11 JUL 2024