

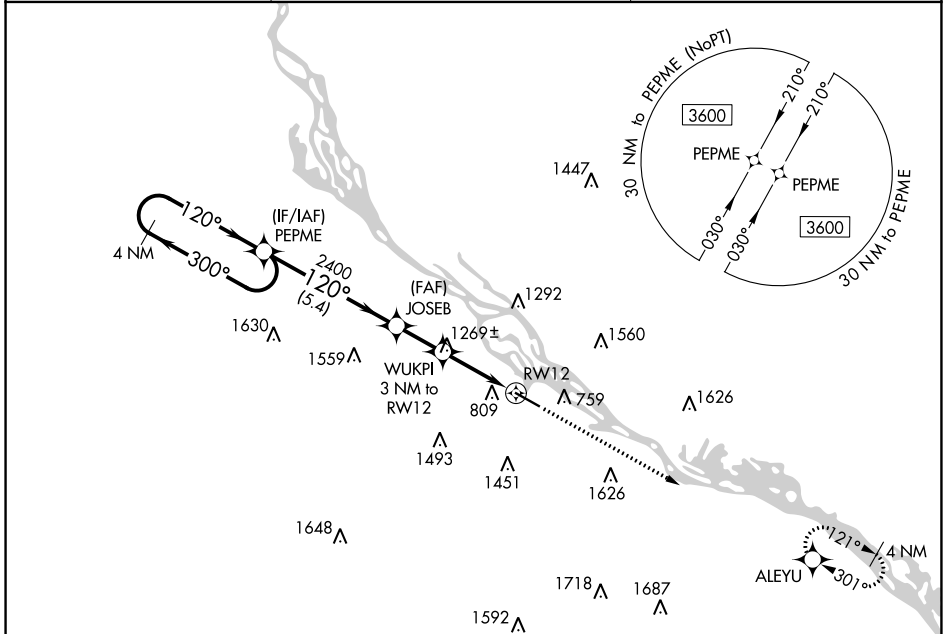
APP CRS	Rwy ldg	5199
120°	TDZE	656
	Apt Elev	656

RNAV (GPS) RWY 12

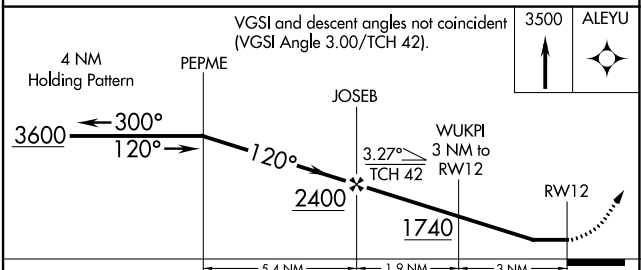
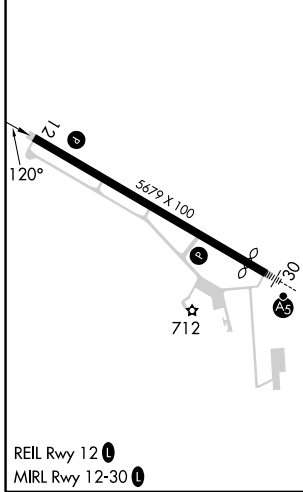
WINONA MUNI-MAX CONRAD FIELD (O_NA)

<p>⚠ Rwy 12 helicopter visibility reduction below ¾ NA. DME/DME RNP-0.3 NA.</p>	<p>MISSED APPROACH: Climb to 3500 direct ALEYU and hold.</p>
--	--

<p>AWOS-3 118.075</p>	<p>MINNEAPOLIS CENTER 128.6 363.0</p>	<p>UNICOM 122.8 (CTAF) ①</p>
----------------------------------	--	---



ELEV 656	D	TDZE 656
----------	----------	----------



CATEGORY	A	B	C	D
LNAV MDA	1520-1 864 (900-1)	1520-1¼ 864 (900-1¼)	1520-2½ 864 (900-2½)	864 (900-2½)
C CIRCLING	1560-1¼ 904 (1000-1¼)	1580-1¼ 924 (1000-1¼)	1780-3 1124 (1200-3)	1980-3 1324 (1400-3)

RNAV (GPS) RWY 12

NC-1, 13 JUN 2024 to 11 JUL 2024

NC-1, 13 JUN 2024 to 11 JUL 2024