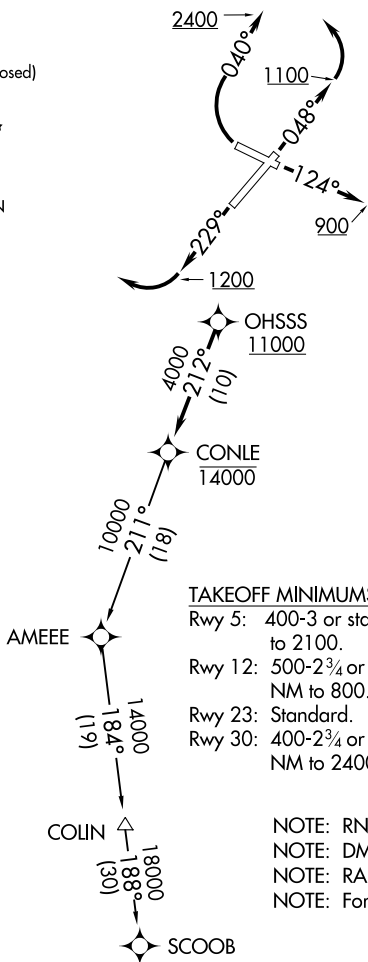


# CONLE FOUR DEPARTURE (RNAV)

ATIS  
 124.875  
 CLNC DEL  
 127.425  
 126.9 (when tower closed)  
 GND CON  
 127.425  
 FREDERICK TOWER \*  
 132.4 (CTAF)  
 UNICOM  
 122.95  
 POTOMAC DEP CON  
 126.1 338.25

**TOP ALTITUDE:  
ASSIGNED BY ATC**



### TAKEOFF MINIMUMS:

- Rwy 5: 400-3 or standard with minimum climb of 260' per NM to 2100.
- Rwy 12: 500-2¾ or standard with minimum climb of 410' per NM to 800.
- Rwy 23: Standard.
- Rwy 30: 400-2¾ or standard with minimum climb of 340' per NM to 2400.

- NOTE: RNAV 1.
- NOTE: DME/DME/IRU or GPS required.
- NOTE: RADAR required.
- NOTE: For turbojet aircraft only.

NOTE: Chart not to scale.



### DEPARTURE ROUTE DESCRIPTION

**TAKEOFF RUNWAY 5:** Climb heading 048° to 1100 before turning left.  
**TAKEOFF RUNWAY 12:** Climb heading 124° to 900 before proceeding westbound.  
**TAKEOFF RUNWAY 23:** Climb heading 229° to 1200 before turning right.  
**TAKEOFF RUNWAY 30:** Climbing right turn heading 040° to 2400 before proceeding on course.  
 Climb on assigned heading to ATC assigned altitude, for vectors to cross OHSSS at or above 11000, then on track 212° to cross CONLE at or below 14000, then on assigned transition. Expect filed altitude within 10 minutes after departure.  
COLIN TRANSITION (CONLE4.COLIN)  
SCOOB TRANSITION (CONLE4.SCOOB)