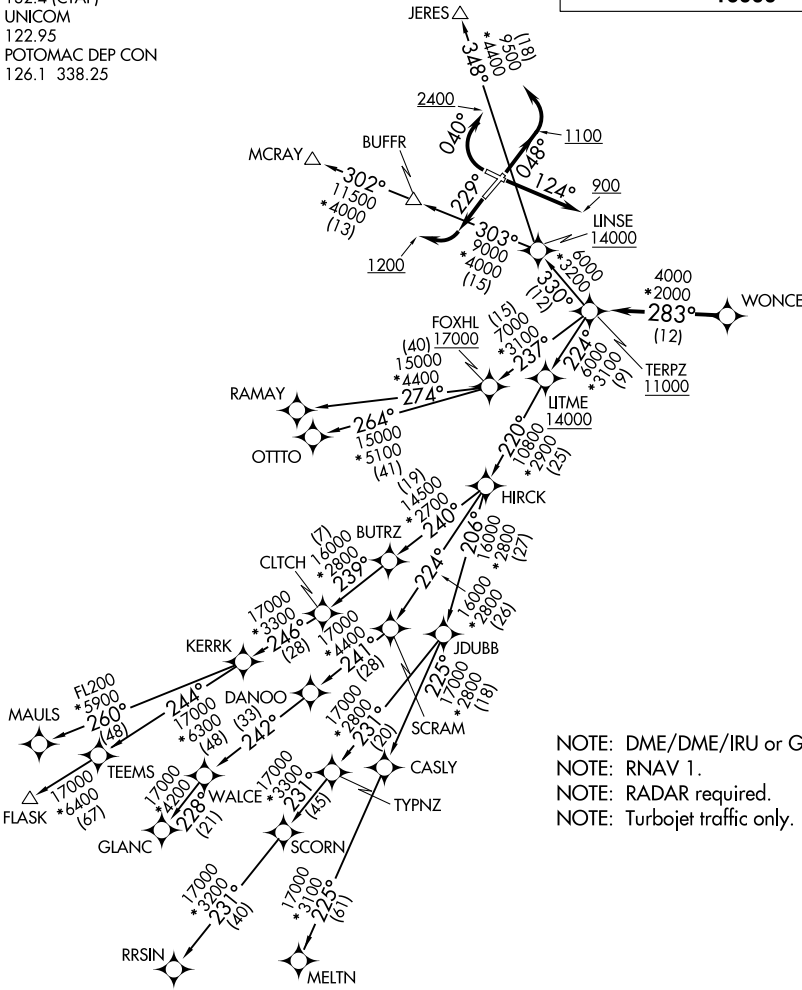


# TERPZ SEVEN DEPARTURE (RNAV)

**TOP ALTITUDE:**  
**RAMAY, OTTTO, MAULS, FLASK,**  
**RRSIN, GLANC, MELTN**  
**TRANSITIONS: 1700N**  
**JERES, MCRAY TRANSITIONS:**  
**1600N**

ATIS  
 124.875  
 CLNC DEL  
 127.425  
 GND CON  
 127.425  
 FREDERICK TOWER\*  
 132.4 (CTAF)  
 UNICOM  
 122.95  
 POTOMAC DEP CON  
 126.1 338.25



NOTE: DME/DME/IRU or GPS required.  
 NOTE: RNAV 1.  
 NOTE: RADAR required.  
 NOTE: Turbojet traffic only.

**TAKEOFF MINIMUMS:**  
 Rwy 23: Standard.  
 Rwy 5: Standard with minimum climb of 260' per NM to 1100.  
 Rwy 12: 500-2¾ or Standard with minimum climb of 395' per NM to 1000.  
 Rwy 30: Standard with minimum climb of 285' per NM to 900.

NOTE: Chart not to scale.

NE-3, 13 JUN 2024 to 11 JUL 2024

NE-3, 13 JUN 2024 to 11 JUL 2024

# TERPZ SEVEN DEPARTURE (RNAV)