

NC-1, 13 JUN 2024 to 11 JUL 2024

MINNEAPOLIS DEP CON  
134.7 284.7  
ATIS  
124.9  
MINNEAPOLIS CLNC DEL  
121.7 (when lower closed)

RADAR required.

TAKEOFF MINIMUMS  
Rwys 10L/R, 18, 28L/R, 36: Standard.

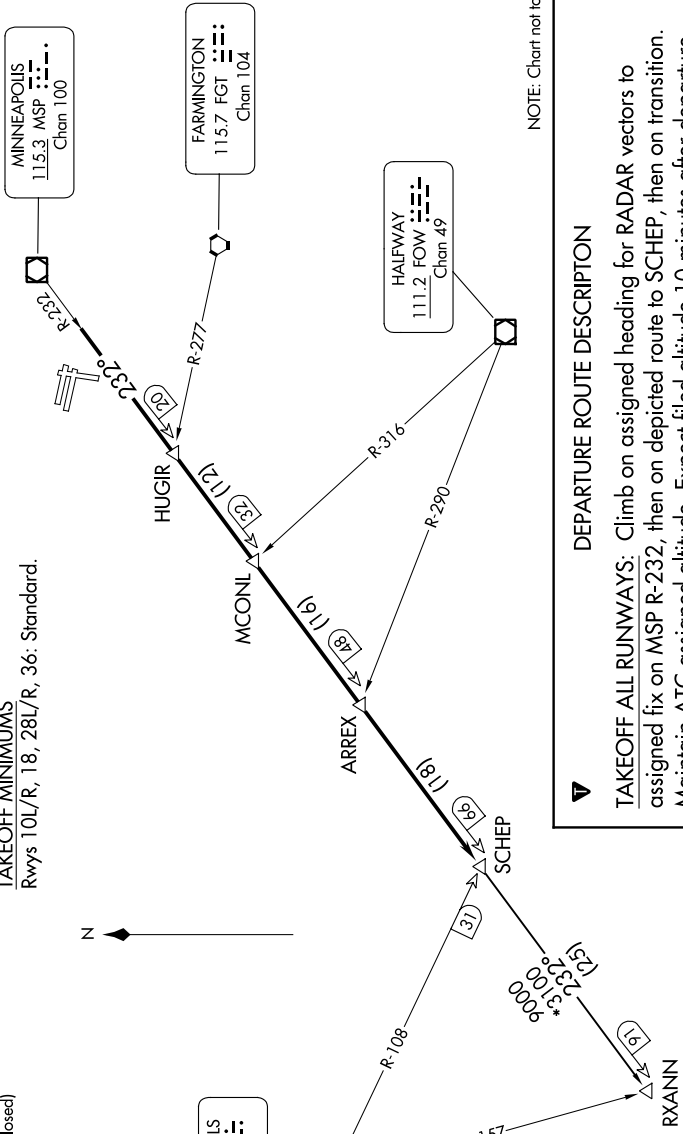
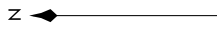
TOP ALTITUDE:  
ASSIGNED BY ATC

MINNEAPOLIS  
115.3 MSP  
Chan 100

REDWOOD FALLS  
113.3 RWF  
Chan 80

FARMINGTON  
115.7 FGT  
Chan 104

HALFWAY  
111.2 FOW  
Chan 49



NOTE: Chart not to scale.

### DEPARTURE ROUTE DESCRIPTION

TAKEOFF ALL RUNWAYS: Climb on assigned heading for RADAR vectors to assigned fix on MSP R-232, then on depicted route to SCHEP, then on transition. Maintain ATC assigned altitude. Expect filed altitude 10 minutes after departure.

RXANN TRANSITION (SCHEP1.RXANN): From over SCHEP INT on MSP R-232 to RXANN INT.

NC-1, 13 JUN 2024 to 11 JUL 2024