

NC-1, 13 JUN 2024 to 11 JUL 2024

DEPARTURE ROUTE DESCRIPTION

TAKEOFF ALL RUNWAYS: Fly assigned heading and altitude for RADAR vectors to MSP VOR/DME then on MSP R-138 to cross JEDET INT/MSP 34 DME, at or above 4000; then on ODI R-301 to ZMBRO INT/ODI 50 DME, thence

. . . .on assigned transition or route. Expect clearance to filed altitude/flight level 10 (ten) minutes after departure.

NODINE TRANSITION [ZMBRO7.ODI]: From over ZMBRO on ODI R-301 to ODI VORTAC.

**TOP ALTITUDE:
(JETS) 7000/
(PROPS) 5000**

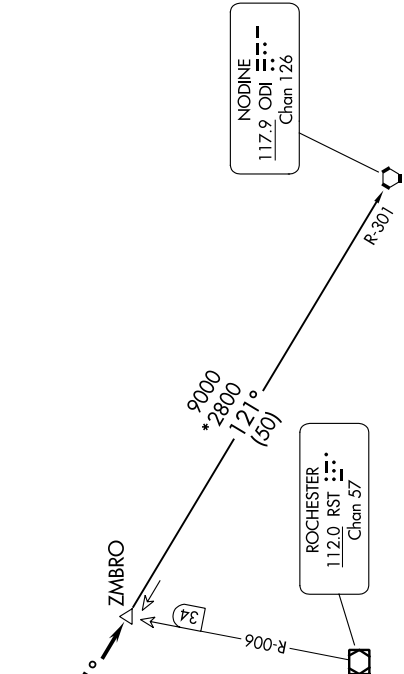
MINNEAPOLIS DEP CON
134.7 284.7
ATIS
124.9
MINNEAPOLIS CLNC DEL
121.7 (when lower closed)
FLYING CLOUD TOWER★
119.15

MINNEAPOLIS
115.3 MSP
Chan 100



TAKEOFF MINIMUMS
Rwys 10L/R, 18, 28L/R, 36: Standard.

HALFWAY
111.2 FOW
Chan 49



NOTE: RADAR required.
NOTE: Chart not to scale.

NC-1, 13 JUN 2024 to 11 JUL 2024