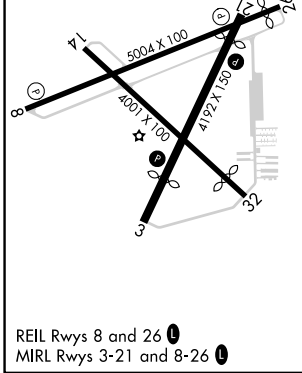
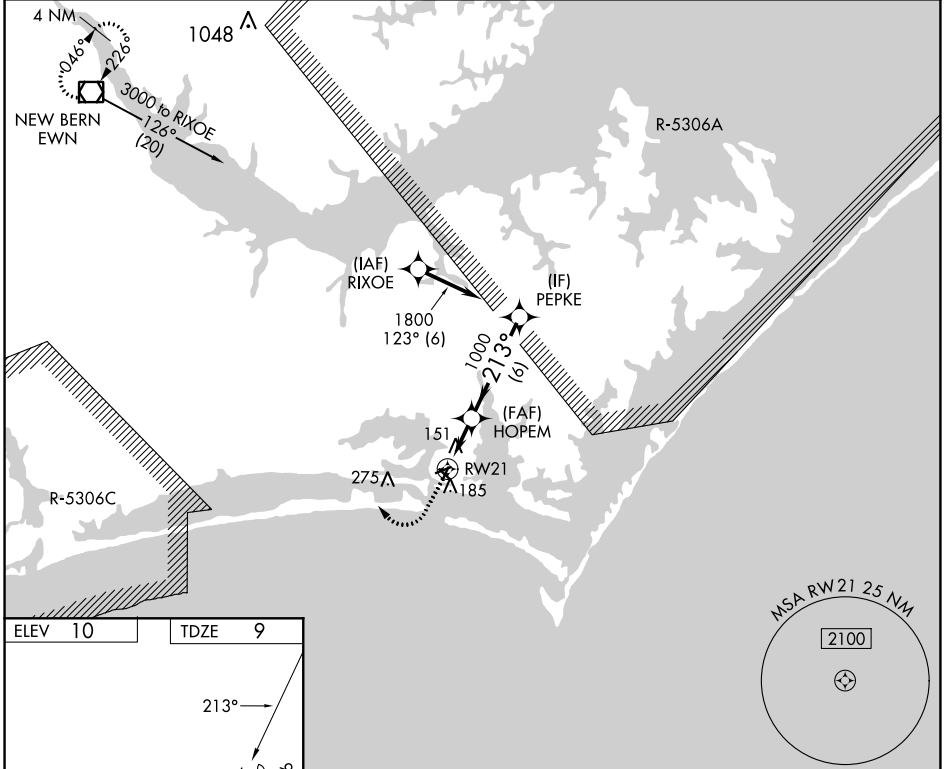


APP CRS	Rwy Idg	3676
213°	TDZE	9
	Apt Elev	10

RNAV (GPS) RWY 21

MICHAEL J SMITH FLD (MR.H)

RNP APCH - GPS.			MISSED APPROACH: Climb to 500 then climbing right turn to 3000 direct EWN VOR/DME and hold.
ASOS 135.375	CHERRY POINT APP CON 132.575 299.6	CLNC DEL 125.65	UNICOM 122.8 (CTAF) 0



500	3000	EWN	VGSI and descent angles not coincident (VGSI Angle 4.00/TCH 54).
↑	↷	◻	
RW21		HOPEM	PEPKE
0.8 NM to RW21		1000	1800
3.00° TCH 40		213°	
0.8		2.2 NM	
6 NM			
CATEGORY	A	B	C
LNAV MDA	420-1	411 (500-1)	NA
CIRCLING	540-1	530 (600-1)	NA

SE-2, 13 JUN 2024 to 11 JUL 2024

SE-2, 13 JUN 2024 to 11 JUL 2024