

LOC/DME I-OIU 110.75 Chan 44 (Y)	APP CRS 011°	Rwy Idg 9400
		TDZE 296
		Apt Elev 312

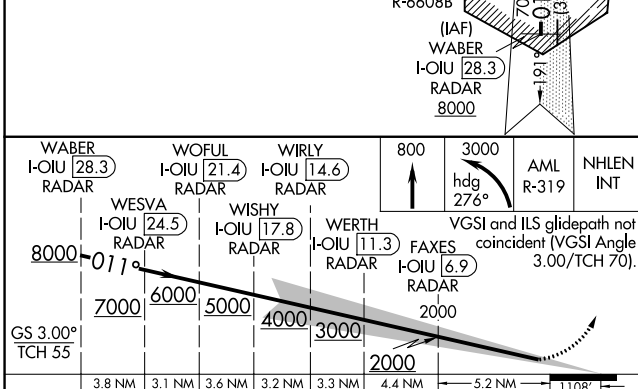
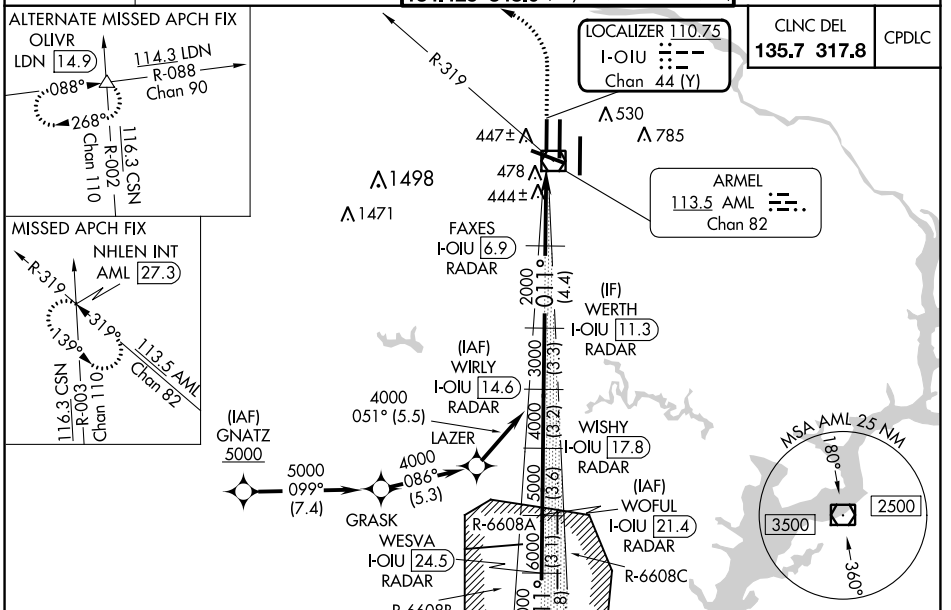
ILS RWY 1L (CAT II & III)

WASHINGTON DULLES INTL (IAD)

RNP APCH - GPS. From GNATZ.
DME or RADAR required.
RADAR required for procedure entry at WABER.
Simultaneous approach authorized.

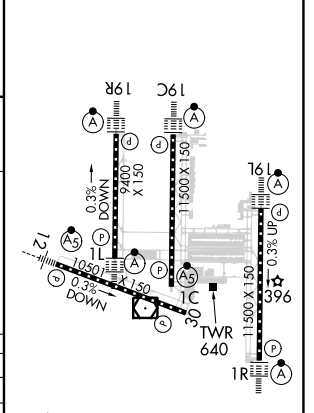
ALSIF-2
MISSED APPROACH: Climb to 800 then climbing left turn to 3000 on heading 276° and on AML VOR/DME R-319 to NHLEN INT/AML 27.3 DME and hold.

D-ATIS 134.85	POTOMAC APP CON 120.45 306.925 (241°-330°) 128.525 306.925 (091°-240°) 126.1 338.25 (331°-090°)	DULLES TOWER 120.1 317.8 (Rwy 1R/19L) 120.25 348.6 (Rwy 1C/19C) 134.425 348.6 (Rwys 1L/19R and 12/30)	GND CON 121.9 317.8 (EAST) 121.625 348.6 (WEST)
-------------------------	---	---	---



ELEV 312	D	TDZE 296
----------	----------	----------

WABER I-OIU 28.3 RADAR	WESVA I-OIU 24.5 RADAR	WIRLY I-OIU 14.6 RADAR	800	3000	AML R-319	NHLEN INT
WOFUL I-OIU 21.4 RADAR	WISHY I-OIU 17.8 RADAR	WERTH I-OIU 11.3 RADAR	↑	hdg 276°	VGSi and ILS glidepath not coincident (VGSi Angle 3.00/TCH 70°).	
WESVA I-OIU 24.5 RADAR	WISHY I-OIU 17.8 RADAR	WERTH I-OIU 11.3 RADAR	8000	7000	6000	5000
WESVA I-OIU 24.5 RADAR	WISHY I-OIU 17.8 RADAR	WERTH I-OIU 11.3 RADAR	4000	3000	2000	1108
WESVA I-OIU 24.5 RADAR	WISHY I-OIU 17.8 RADAR	WERTH I-OIU 11.3 RADAR	3.8 NM	3.1 NM	3.6 NM	3.2 NM
WESVA I-OIU 24.5 RADAR	WISHY I-OIU 17.8 RADAR	WERTH I-OIU 11.3 RADAR	4.4 NM	5.2 NM	1108'	



TDZ/CL Rwys 1C, 1L, 1R, 12, 19C and 19R
REIL Rwy 30
HIRL all Rwys

NE-3, 13 JUN 2024 to 11 JUL 2024

NE-3, 13 JUN 2024 to 11 JUL 2024