

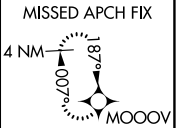
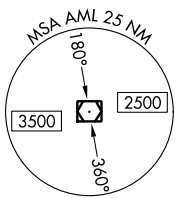
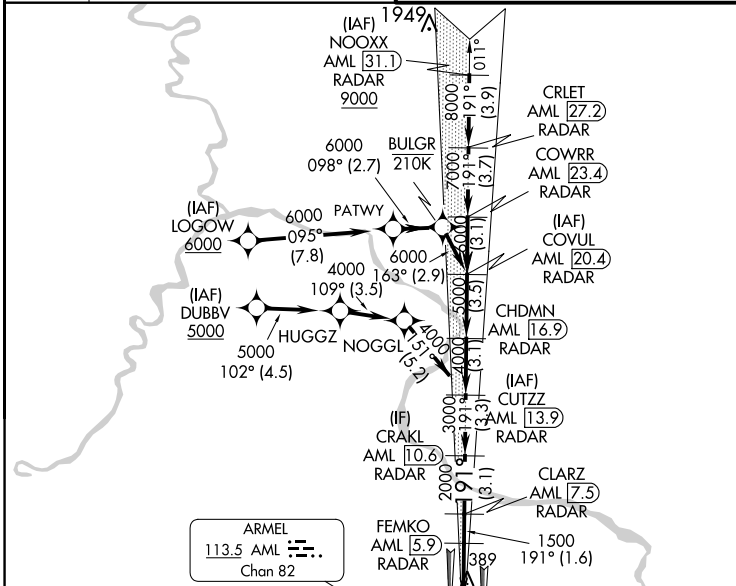
LOC I-DLX 111.3	APP CRS 191°	Rwy Idg 11089 TDZE 272 Apt Elev 312
---------------------------	------------------------	----------------------------------------------------------------

ILS or LOC RWY 19C

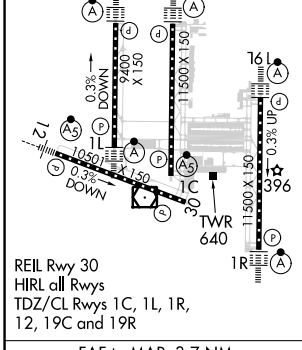
WASHINGTON DULLES INTL (IAD)

RNP APCH - GPS. RADAR required for procedure entry at NOOOX. DME or RADAR required.		ALSIF-2 	MISSED APPROACH: Climb to 3000 direct MOOOV and hold.
<p>⚠ Simultaneous approach authorized. DME from AML VOR/DME. DME use requires simultaneous reception of I-DLX and AML DME. ⚠ For inop ALS, increase S-LOC 19C Cat C and D visibility to RVR 5500.</p>			
D-ATIS 134.85	POTOMAC APP CON 120.45 306.925 (241°-330°) 128.525 306.925 (091°-240°) 126.1 338.25 (331°-090°)	DULLES TOWER 120.1 317.8 (Rwy 1R/19L) 120.25 348.6 (Rwy 1C/19C) 134.425 348.6 (Rwys 1L/19R and 12/30)	GND CON 121.9 317.8 (EAST) 121.625 348.6 (WEST)

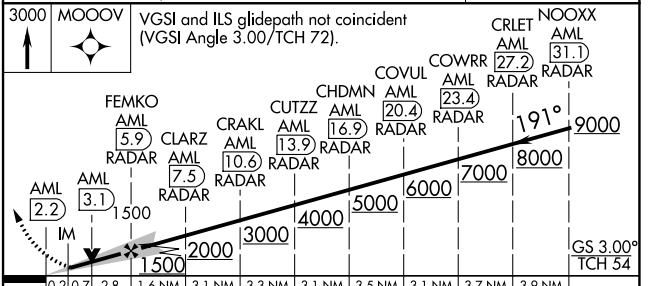
CLNC DEL 135.7 317.8	CPDLC
--------------------------------	-------



ELEV 312	D	TDZE 272
----------	----------	----------



REIL Rwy 30 HIRL all Rwys TDZ/CL Rwys 1C, 1L, 1R, 12, 19C and 19R
FAF to MAP 3.7 NM
Knots 60 90 120 150 180
Min:Sec 3:42 2:28 1:51 1:29 1:14



3000 MOOOV	VGSi and ILS glidepath not coincident (VGSi Angle 3.00/TCH 72).			
CATEGORY	A	B	C	D
S-ILS 19C	472/18 200 (200-½)			
S-LOC 19C	640/24	368 (400-½)	640/35	368 (400-½)
CIRCLING	940-1	628 (700-1)	940-1¾ 628 (700-1¾)	1180-2¾ 868 (900-2¾)

NE-3, 13 JUN 2024 to 11 JUL 2024

NE-3, 13 JUN 2024 to 11 JUL 2024