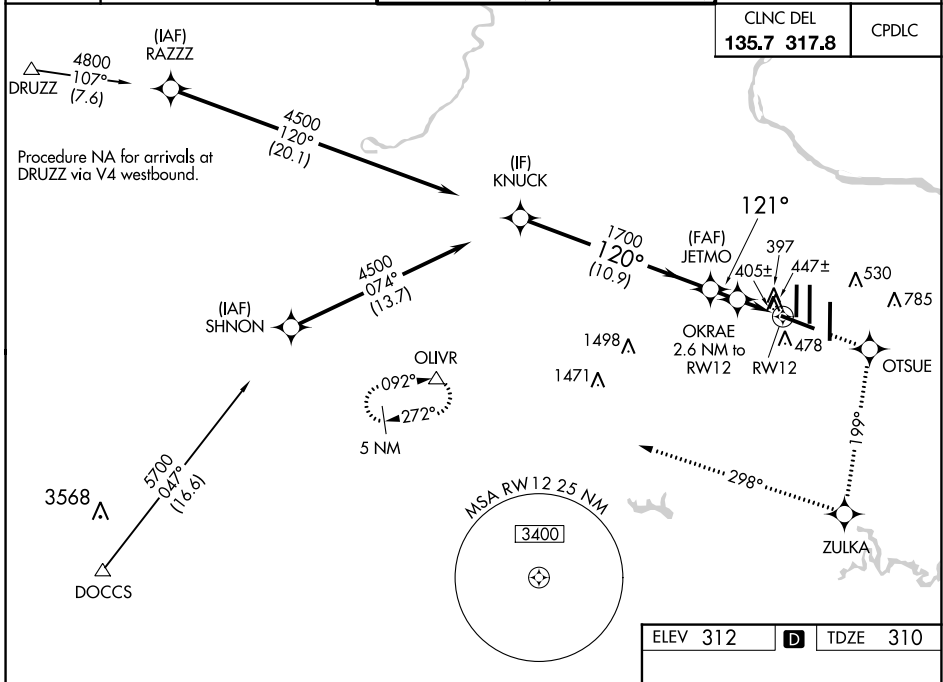


| | | |
|--|------------------------|--|
| WAAS CH 86310 W12A | APP CRS 121° | Rwy ldg 10501 TDZE 310 Apt Elev 312 |
|--|------------------------|--|

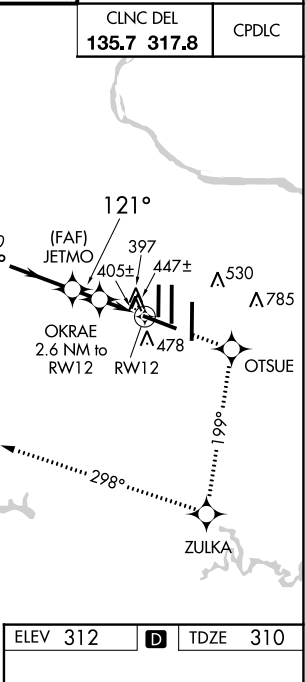
RNAV (GPS) RWY 12

WASHINGTON DULLES INTL (IAD)

| | | | |
|--|---|---|--|
| RNP APCH. | | MALSR | MISSED APPROACH: Climb to 4000 direct OTSUE and via 199° track to ZULKA and right turn via 298° track to OLIVR and hold. |
| ▼ For inop ALS, increase LNAV Cats C/D visibility to RVR 6000. ▲ For uncompensated Baro-VNAV systems, LNAV/VNAV NA below -15°C or above 48°C. | | | |
| D-ATIS 134.85 | POTOMAC APP CON 120.45 306.925 (241°-330°) 128.525 306.925 (091°-240°) 126.1 338.25 (331°-090°) | DULLES TOWER 120.1 317.8 (Rwy 1R/19L) 120.25 348.6 (Rwy 1C/19C) 134.425 348.6 (Rwys 1L/19R and 12/30) | GND CON 121.9 317.8 (EAST) 121.625 348.6 (WEST) |



| | | | | | |
|--|--------|-------------|------------------------|-------------------------|--------|
| VGSi and RNAV glidepath not coincident (VGSi Angle 3.00/TCH 66). | | 4000 | OTSUE | ZULKA | OLIVR |
| | | | | | |
| | | | tr 199° | tr 298° | |
| KNUCK | | JETMO | OKRAE | RW12 | |
| 4500 | | 1700 | 2.6 NM to RW12 | 1.1 NM to RW12 | |
| Procedure Turn NA | | | | | |
| GP 3.00° | | | | | |
| TCH 49 | | | | | |
| | | 10.9 NM | 1.6 NM | 1.5 NM | 1.1 NM |
| CATEGORY | A | B | C | D | |
| LPV DA | | 510/18 | 200 (200-½) | | |
| LNAV/VNAV DA | | 737/50 | 427 (500-1) | | |
| LNAV MDA | 720/24 | 410 (500-½) | 720/40 | 410 (500-¾) | |
| CIRCLING | 940-1 | 628 (700-1) | 940-1¾ 628 (700-1¾) | 1180-2¾ 868 (900-2¾) | |



NE-3, 13 JUN 2024 to 11 JUL 2024

NE-3, 13 JUN 2024 to 11 JUL 2024