

APP CRS	Rwy Idg	<b>11089</b>
<b>191°</b>	TDZE	<b>272</b>
	Apt Elev	<b>312</b>

# RNAV (RNP) Z RWY 19C

WASHINGTON DULLES INTL (IAD)

RNP AR APCH - GPS.

▼ For uncompensated Baro-VNAV systems, procedure NA below -13°C or above 54°C. Simultaneous approach authorized. For inop ALS, increase RNP 0.11 visibility all Cats to RVR 4500, and RNP 0.25 visibility all Cats to RVR 5500.

ALSF-2

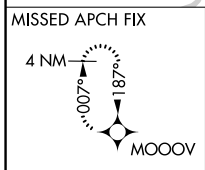
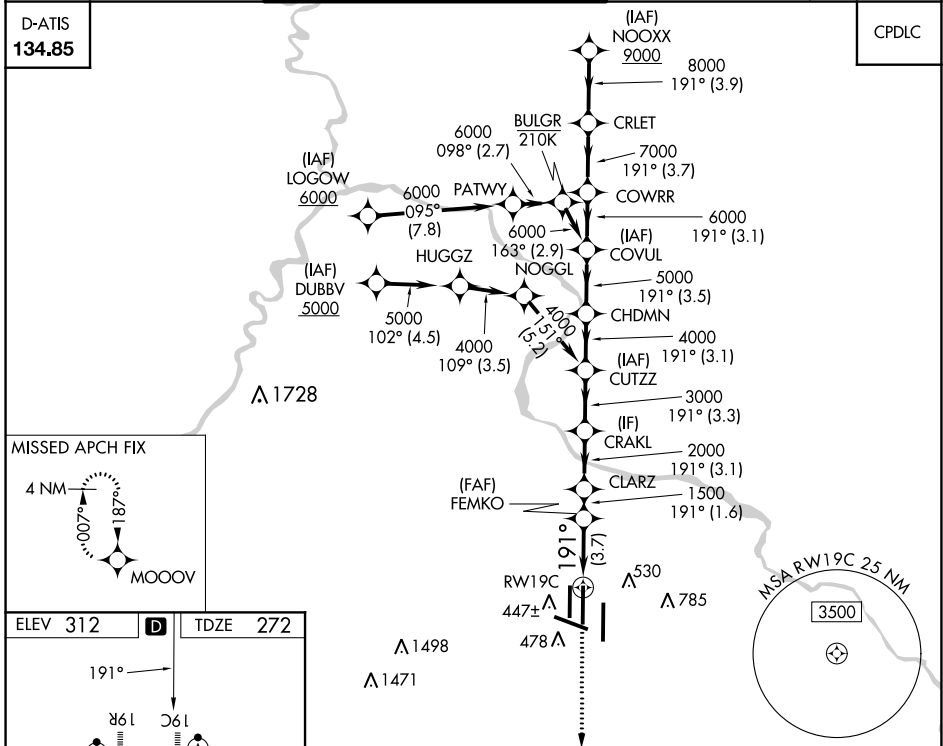


MISSED APPROACH: Climb to 3000 direct MOOOV and hold.

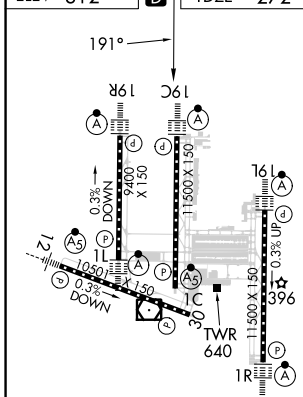
POTOMAC APP CON <b>120.45 306.925</b> (241°-330°) <b>128.525 306.925</b> (091°-240°) <b>126.1 338.25</b> (331°-090°)	DULLES TOWER <b>120.1 317.8</b> (Rwys 1R/19L) <b>120.25 348.6</b> (Rwys 1C/19C) <b>134.425 348.6</b> (Rwys 1L/19R and 12/30)	GND CON <b>121.9 317.8</b> (EAST) <b>121.625 348.6</b> (WEST)	CLNC DEL <b>135.7 317.8</b>
---	---	---	--------------------------------

D-ATIS  
**134.85**

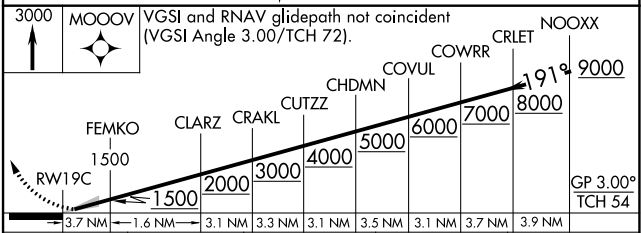
CPDLC



ELEV 312 **D** TDZE 272



TDZ/CL Rwys 1C, 1L, 1R, 12, 19C and 19R  
REIL Rwy 30  
HIRL all Rwys



CATEGORY	A	B	C	D
RNP 0.11 DA		554/24	282 (300-½)	
RNP 0.25 DA		624/30	352 (400-¾)	
RNP 0.30 DA		702/40	430 (400-¾)	

### AUTHORIZATION REQUIRED

NE-3, 13 JUN 2024 to 11 JUL 2024

NE-3, 13 JUN 2024 to 11 JUL 2024