

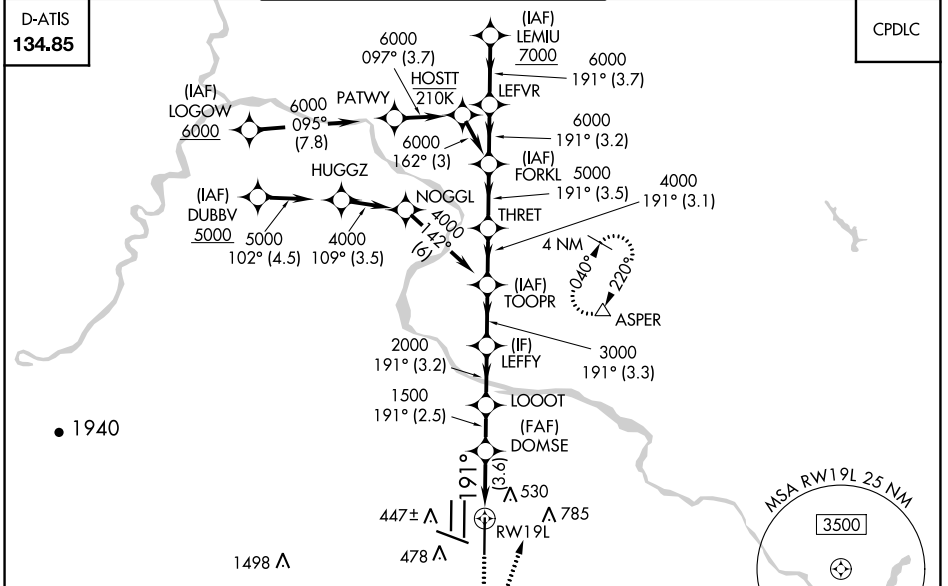
APP CRS	Rwy Idg	11500
191°	TDZE	302
	Apt Elev	312

RNAV (RNP) Z RWY 19L

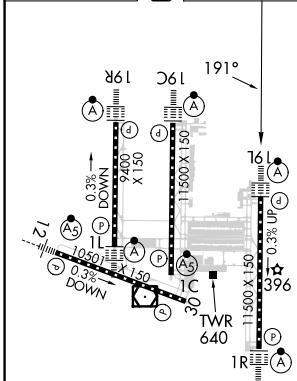
WASHINGTON DULLES INTL (IAD)

RNP AR APCH - GPS.	ALSf-2	MISSED APPROACH: Climb to 800 then climbing left turn to 3000 direct ASPER and hold.
▼ For uncompensated Baro-VNAV systems, procedure NA below -13°C or above 54°C. Simultaneous approach authorized. For inop ALS, increase RNP 0.11 all Cats visibility to RVR 4500.		

POTOMAC APP CON	DULLES TOWER	GND CON	CLNC DEL
120.45 306.925 (241°-330°)	120.1 317.8 (Rwys 1R/19L)	121.9 317.8 (EAST)	135.7 317.8
128.525 306.925 (091°-240°)	120.25 348.6 (Rwys 1C/19C)	121.625 348.6 (WEST)	
126.1 338.25 (331°-090°)	134.425 348.6 (Rwys 1L/19R and 12/30)		



ELEV 312	D	TDZE 302
----------	----------	----------



800	3000	ASPER	VGSI and RNAV glidepath not coincident (VGSI Angle 3.00/TCH 75).				LEMIU			
			DOMSE	LOOFT	LEFFY	TOOPR	THRET	FORKL	LEFVR	LEMIU
			1500	2000	3000	4000	5000	6000	6000	7000
			3.6 NM	2.5 NM	3.2 NM	3.3 NM	3.1 NM	3.5 NM	3.2 NM	3.7 NM
CATEGORY			A	B	C	D				
RNP 0.11 DA			620/24	318 (400-1/2)						
RNP 0.15 DA			684/35	382 (400-5/8)						
RNP 0.30 DA			730/40	428 (500-3/4)						

TDZ/CL Rwys 1C, 1L, 1R, 12, 19C and 19R
REIL Rwy 30
HIRL All Rwys

NE-3, 13 JUN 2024 to 11 JUL 2024

NE-3, 13 JUN 2024 to 11 JUL 2024