

WAAS CH <b>86709</b> <b>W19D</b>	APP CRS <b>191°</b>	Rwy Idg TDZE <b>278</b> Apt Elev <b>312</b>	<b>9400</b>
----------------------------------------	------------------------	------------------------------------------------------	-------------

# RNAV (GPS) Y RWY 19R

WASHINGTON DULLES INTL (IAD)

RNP APCH - GPS.

**▽** For uncompensated Baro-VNAV systems, LNAV/VNAV NA below -13°C or above 54°C. Simultaneous approach authorized. LNAV procedure NA during simultaneous operations. Use of FD or AP required during simultaneous operations.

ALSf-2

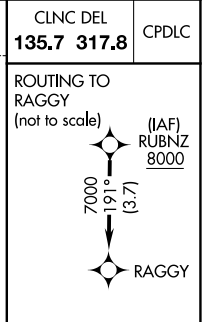
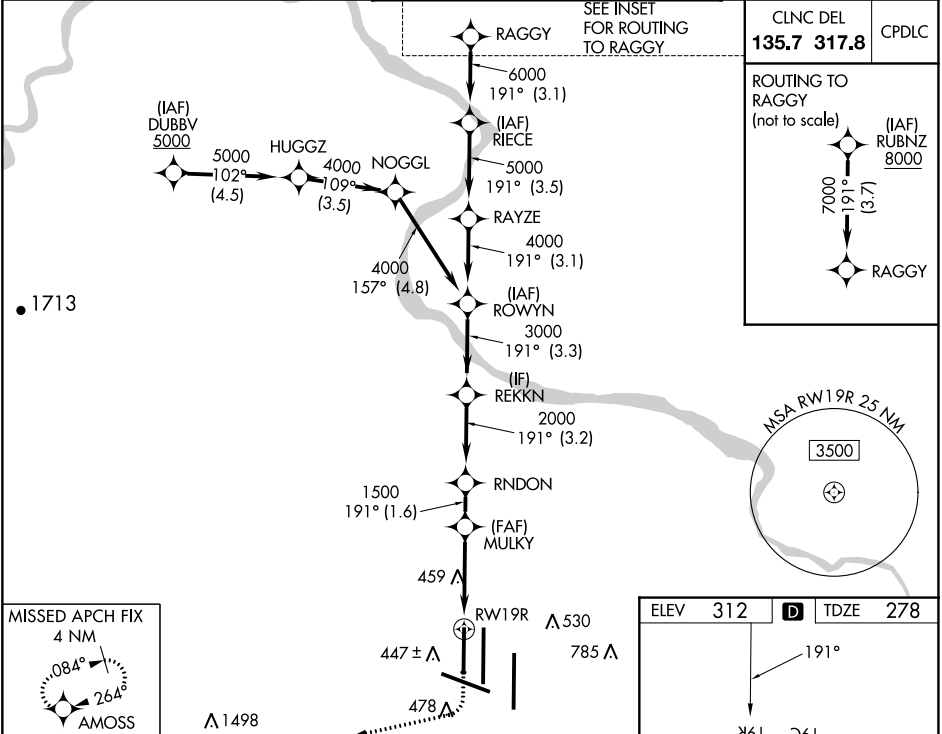


**MISSED APPROACH:** Climb to 800 then climbing right turn to 3000 direct AMOSS and hold.

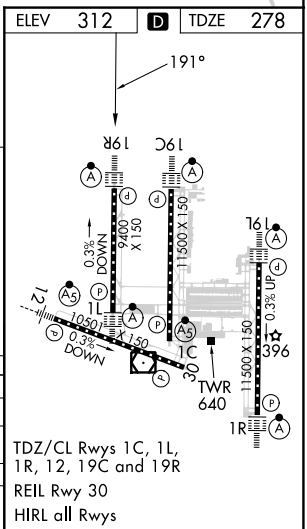
D-ATIS <b>134.85</b>	POTOMAC APP CON		
	<b>120.45</b>	<b>306.925</b>	(241°-330°)
	<b>128.525</b>	<b>306.925</b>	(091°-240°)
	<b>126.1</b>	<b>338.25</b>	(331°-090°)

DULLES TOWER	
<b>120.1</b>	<b>317.8</b> (Rwy 1R/19L)
<b>120.25</b>	<b>348.6</b> (Rwy 1C/19C)
<b>134.425</b>	<b>348.6</b> (Rwy 1L/19R and 12/30)

GND CON	
<b>121.9</b>	<b>317.8</b> (EAST)
<b>121.625</b>	<b>348.6</b> (WEST)



MISSED APCH FIX 4 NM		AMOSS	
800	3000	AMOSS	
VGSi and RNAV glidepath not coincident (VGSi Angle 3.00/TCH 70).			
	MULKY	RNDON	REKKN
	1.2 NM to RWY 19R	RAYZE	ROWYN
	1500	4000	5000
	~1500	6000	7000
	1.2	2.5	1.6
	3.2	3.3	3.1
	3.5	3.1	3.7
CATEGORY	A	B	C
LPV DA	478/18		200 (200-1/2)
LNAV/VNAV DA	708/40		430 (400-3/4)
LNAV MDA	720/24	442 (500-1/2)	720/45
CIRCLING	940-1	628 (700-1)	940-1 3/4
			628 (700-1 3/4)
			1180-2 3/4
			868 (900-2 3/4)



NE-3, 13 JUN 2024 to 11 JUL 2024

NE-3, 13 JUN 2024 to 11 JUL 2024