

WAAS CH <b>97509</b> <b>W01B</b>	APP CRS <b>011°</b>	Rwy ldg <b>11500</b> TDZE <b>286</b> Apt Elev <b>312</b>
--	------------------------	--

# RNAV (GPS) Y RWY 1C

WASHINGTON DULLES INTL (IAD)

RNP APCH - GPS.

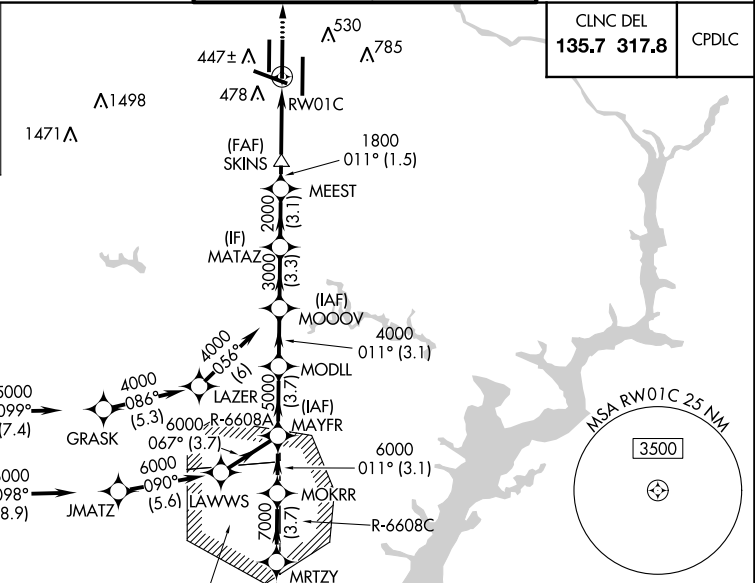
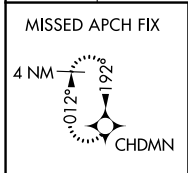
**⚠** For uncompensated Baro-VNAV systems, LNAV/VNAV NA below -13°C or above 54°C.  
**⚠** Use of FD or AP required during simultaneous operations. LNAV procedure NA during simultaneous operations. Simultaneous approach authorized. For inop ALR, increase LNAV/VNAV all Cats visibility to 1 1/2 SM. Increase LNAV Cat C/D visibility to 1 1/4 SM.

MALSR

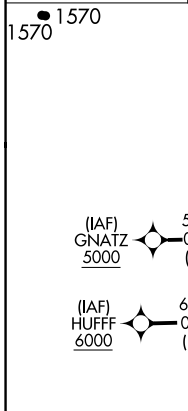


**MISSED APPROACH:**  
Climb to 4000 direct CHDMN and hold, continue climb-in-hold to 4000.

D-ATIS <b>134.85</b>	POTOMAC APP CON <b>120.45 306.925</b> (241°-330°) <b>128.525 306.925</b> (091°-240°) <b>126.1 338.25</b> (331°-090°)	DULLES TOWER <b>120.1 317.8</b> (Rwy 1R/19L) <b>120.25 348.6</b> (Rwy 1C/19C) <b>134.425 348.6</b> (Rwys 1L/19R and 12/30)	GND CON <b>121.9 317.8</b> (EAST) <b>121.625 348.6</b> (WEST)
-------------------------	---	---	---



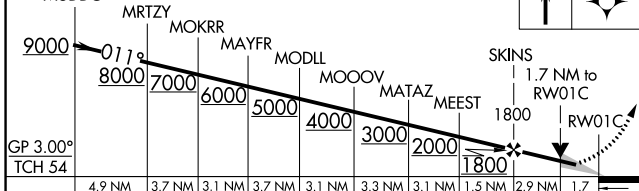
CLNC DEL <b>135.7 317.8</b>	CPDLC
--------------------------------	-------



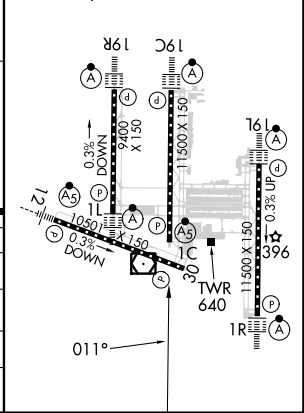
ELEV 312	<b>D</b>	TDZE 286
----------	----------	----------

TDZ/CL Rwys 1C, 1L, 1R, 12, 19C, and 19R  
REIL Rwy 30  
HIRL all Rwys

VGSI and RNAV glidepath not coincident (VGSI Angle 3.00/TCH 70).



CATEGORY	A		B		C		D
LPV DA	486/18		200 (200-1/2)				
LNAV/VNAV DA	801/55		515 (500-1 1/4)				
LNAV MDA	900/24	614 (600-1/2)	900-1 3/8		614 (600-1 1/8)		
CIRCLING	940-1	628 (700-1)	940-1 3/4		1180-2 3/4		868 (900-2 1/4)



NE-3, 13 JUN 2024 to 11 JUL 2024

NE-3, 13 JUN 2024 to 11 JUL 2024