

SCRAM SIX DEPARTURE (RNAV)

NE-3, 13 JUN 2024 to 11 JUL 2024

TOP ALTITUDE:
3000

P-56B



P-56A



DEPARTURE ROUTE DESCRIPTION

TAKEOFF RWY 1L/C/R, 19L/C/R, 30: Climb on heading assigned by ATC, expect RADAR vectors to POOCH, then on track 240° to SCRAM, thence. . .

. . . .as depicted. Maintain 3000. Expect clearance to filed altitude within ten (10) minutes after departure.

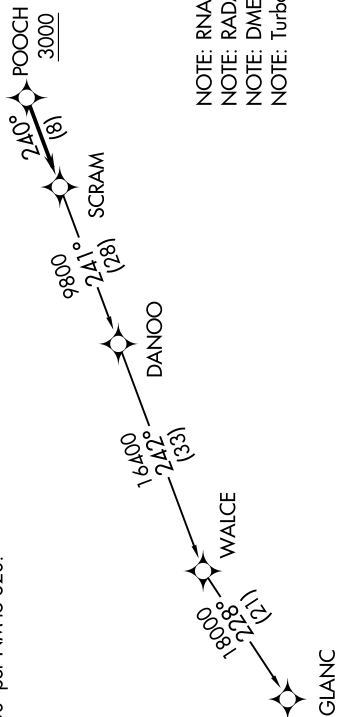
GLANC TRANSITION (SCRAM6.GLANC):

D-ATIS
134.85
CLNC DEL
135.7 317.8
CPDIC
GND CON
121.9 317.8 (EAST)
121.625 348.6 (WEST)

DULLES TOWER
120.1 317.8 (Rwy 1R/19L)
120.25 348.6 (Rwy 1C/19C)
134.425 348.6 (Rwys 1L/19R, 12/30)
POTOMAC DEP CON
126.65 350.2

TAKEOFF MINIMUMS:

Rwys 1L/C/R, 19L/C/R, 30:
Standard with a minimum climb
of 500' per NM to 820.



NOTE: RNAV 1.
NOTE: RADAR required.
NOTE: DME/DME/IRU or GPS required.
NOTE: Turbo-jets only.

NOTE: Chart not to scale.

NE-3, 13 JUN 2024 to 11 JUL 2024